

RIG 7

Latshaw DRILLING

Primary Equipment



Major Systems	
Drawworks	
Continental Emsco C1 Type II 1500HP	
Low Low rated 704,900# single line pull w/twin GE 752 DC motor input	
Prime Power	
Omron/ SCR System, 3 Generator Bays, 4 SCR Bays	
3-Caterpillar 3512B w/ Kato 1365 KW AC Gen Sets	
Mast/Substructure	
Branham 142' 1,000,000# Hook load with 25' Box on Box	
Crown Block 6-61" Sheaves 1-3/8" Groove	
Fastline 1- 61" 1-3/8" Grooved	
Walking System	
Top Drive - Traveling Block - Pipe Handling	
NOV TDS11 SA VF AC 500Ton	
500 Ton Traveling Block	
SJPetro 27 1/2" Rotary /Drwks Driven	
Varco ST 80 Iron Roughneck and IAT rotating MH	
Mud Pumps	
2 - Lewco WH-1612 Triplex, 1600HP	
7,500#WP PSI Fluid Ends and delivery system driven by twin GE 752 DC motors	
Mud System	
2-Tank system (1,200bbl Capacity)	
Twin National 285P Linear Motion Shale Shakers	
BOP Stack Description	
13 5/8" 5,000#WP Annular	
13 5/8" 5,000#WP Double Ram	
13 5/8" 5,000#WP Single Ram	
Drill String	
8 " and 6-1/2" Drill Collars	
5" Drill Pipe	

Secondary Systems	
Baylor Elmagco 7040 Auxiliary Brake	
1-3/8" WireRope 6 x 19 EIP IWRC	
Cold Start air system, primary Rig Air supply, floor hoisting systems	
Fuel Capacity 18,000gal & Water Storage Capacity 500bbl	
Rotary Slip load 1,000,000# , Set Back 600,000#	
Tool Pusher and Crew quarters, rig matting boards	
Martin-Decker Type E, Pump SPM & PSI, Top Drive control, SCR system controls	
Manual Tongs, elevators, slips and clamps for Latshaw supplied DS	
Church Energy 3,000PSI Accumulator, 180 gal, 6 station w/remote	
9-NOV Max2000 10HP Mud agitators	
NOV Brandt Desander 3- 10" Cones w/6 x 8 x 11 Centrifugal driven by 100HP elect mtr	
NOV DeSilter 20-4" Cones w/ 6 x 8 x 14 Centrifugal driven by 100HP elect mtr	
CE 4-1/1"6 10,000#WP x 2-1/16 10,000#WP Choke Manifold H2S Trim	
NOV Brandt D-1000-C Degasser	
5" 19.5# G-105 and S-135	
Heavy weight Drill pipe	

Annular

13-5/8" 5,000#WP

Double

13 5/8" 5,000#WP Pipe

13 5/8" 5,000#WP Blind

Single

13 5/8" 5,000#WP Pipe

With required adaptors

Mud Cross 11" 10,000#WP

Wing Valve 4 1/16" 10,000#WP

HCR Valve 4 1/16" 10,000#WP

Choke Blk 4 1/16" 10,000#WP

Kill Valve 2 1/16" 10,000#WP

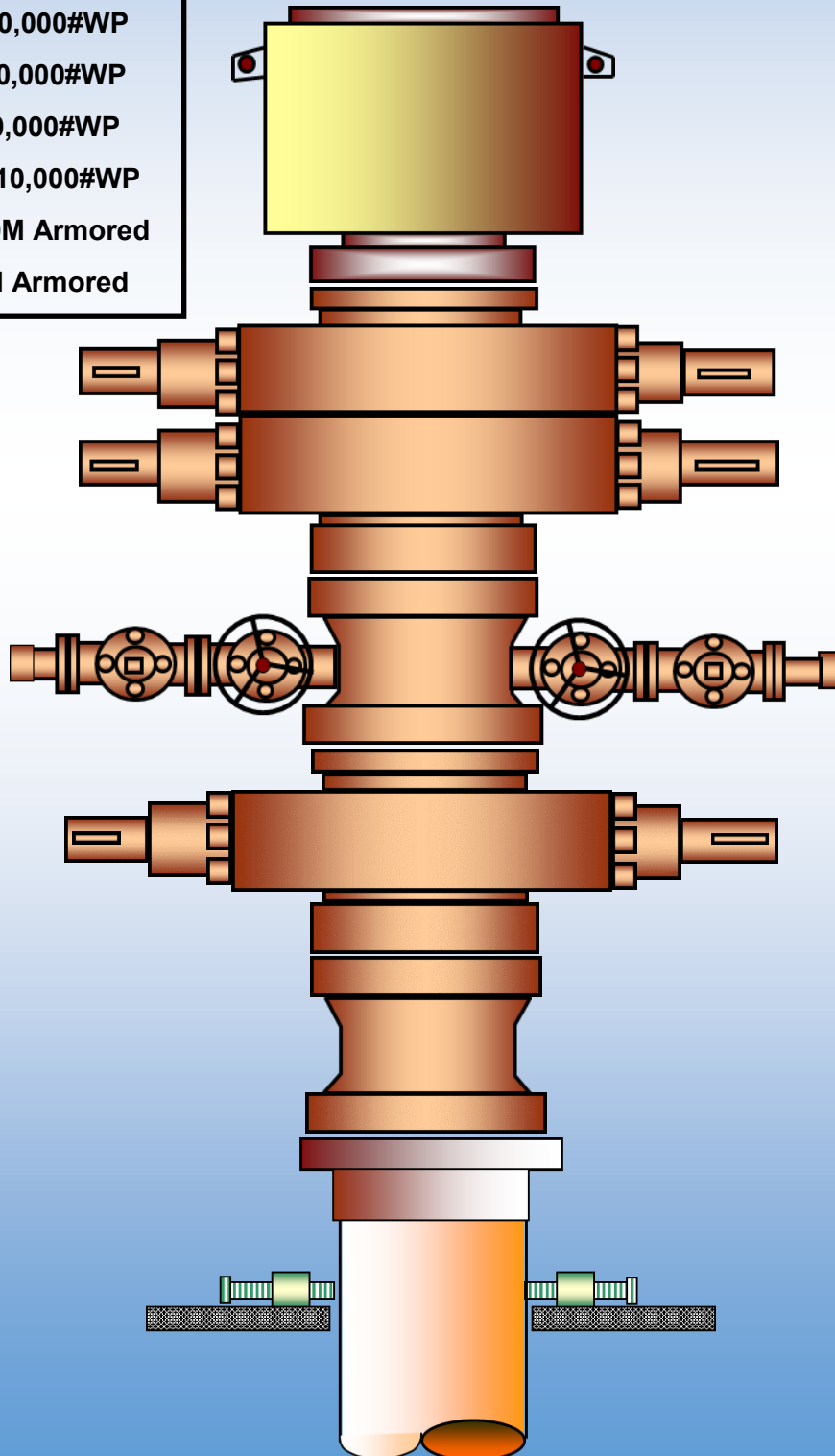
Check Valve 2 1/16" 10,000#WP

Choke Line 4 1/16" 10M Armored

Kill Line 2 1/16" 10M Armored

RIG 7

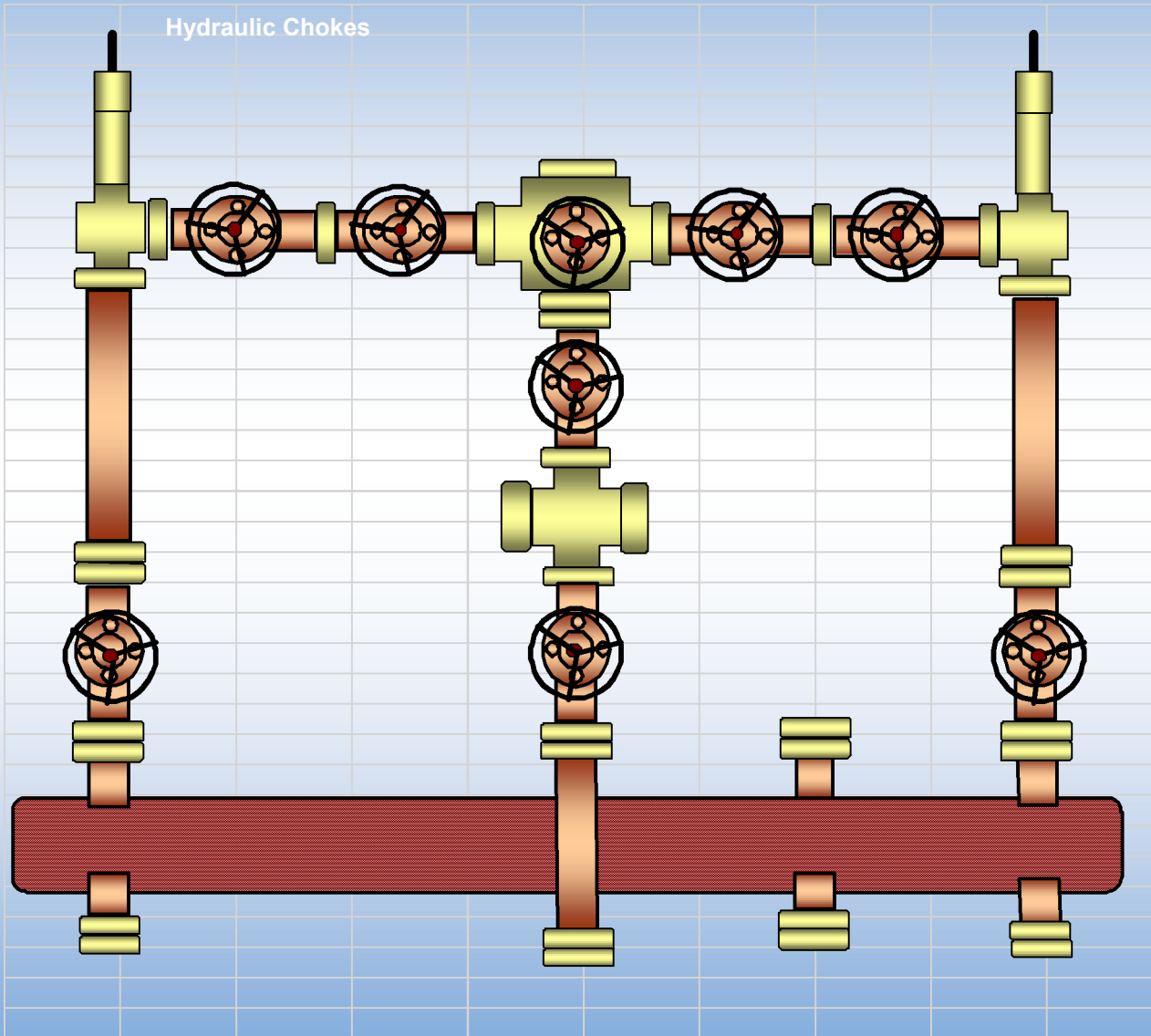
Latshaw
DRILLING



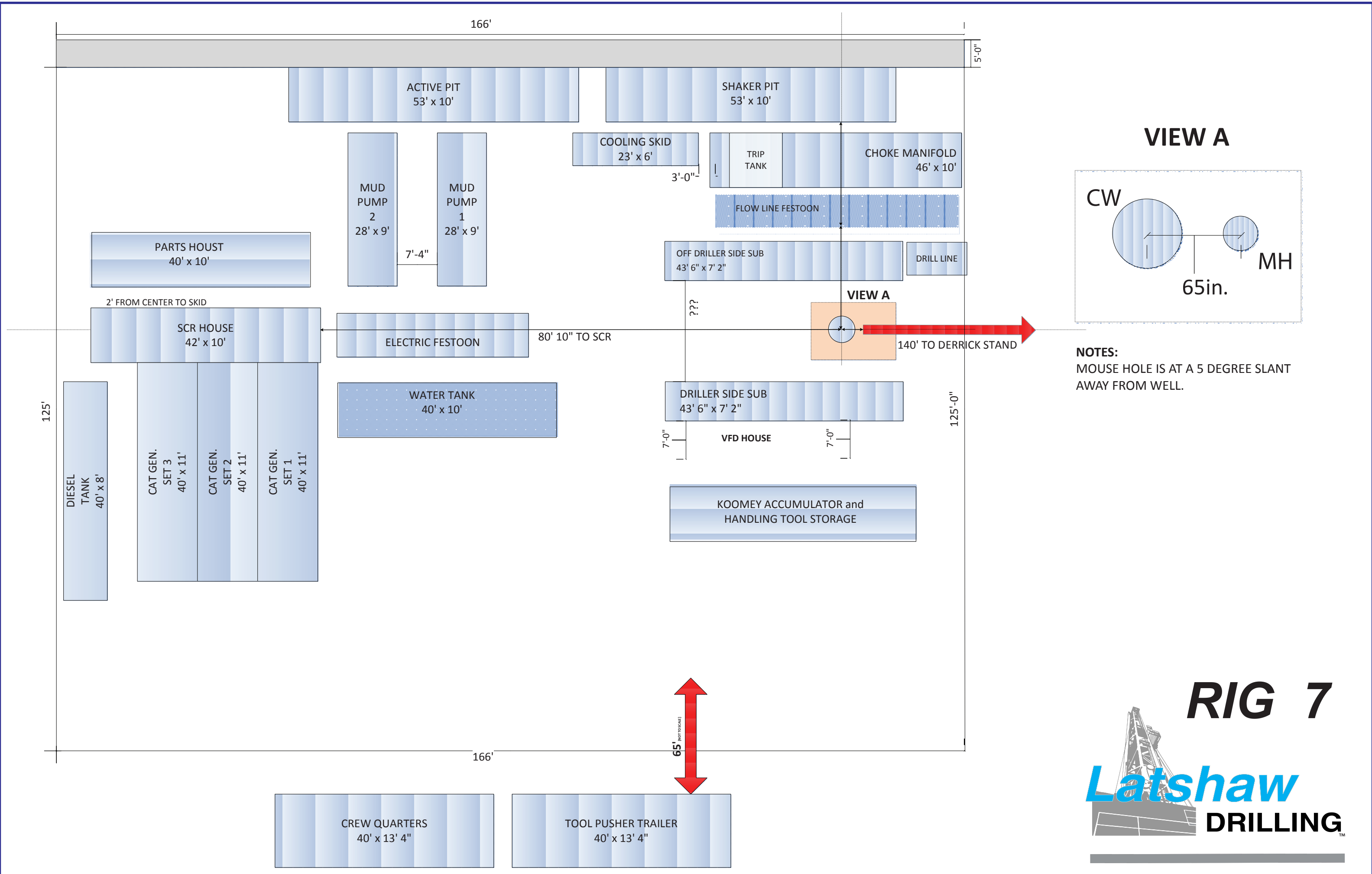
RIG 7



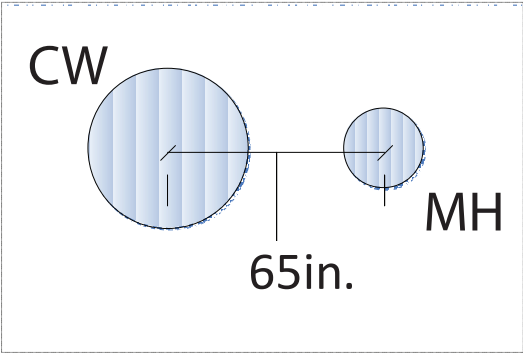
Operator Supplied
Hydraulic Chokes



- 2 - Gate Valve 4 1/16" 10,000#WP
- 4 - Gate Valve 3 1/16" 10,000#WP
- 2- Gate Valve 3 1/8" 5,000#WP
- 1- Gate Valve 2 1/16" 10,000#WP
- 2 - Manual Adjustable Choke 3 1/10" 10,000#WP
- 2 - DSA, 3 1/16" 10,000#WP
- 2 - Spacer Spool, 3 1/8" 5 000#WP
- 1 - Spool, flange adp 2 1/16" 10M
- 2 - Studded Cross (4way) 10,000#WP
- 1 - Tee Studded
- 1 - Instrument Flange and Gauge
- 10 3/4" Buffer Chamber
- 2 - Blind Flanges, 4 1/16" & 3 1/8" 5M
- 3 - Flanges, 4 1/16" 5M & 10M
- 1 - Adapter Spool 2 1/16" 10,000#WP



VIEW A



NOTES:
MOUSE HOLE IS AT A 5 DEGREE SLANT
AWAY FROM WELL.

RIG 7

