



## Primary Equipment



Major Systems	
<b>Drawworks</b>	
Continental Emsco D3 Type II 1000HP	
Low Low rated 525,000# single line pull w/twin GE 752 DC motor input	
<b>Prime Power</b>	
Omron SCR System, 3 Generator Bays, 3 SCR Bays	
3-Caterpillar 3512B w/ Kato 1365 KW AC Gen Sets	
<b>Mast/Substructure</b>	
Dreco 142' 550,000# Hook load with 25' Box on Box with 12 lines strung	
Crown Block 6-42" Sheaves 1-1/4" Groove	
Fastline 1- 50" 1-1/4" Grooved	
<b>Top Drive - Traveling Block - Pipe Handling</b>	
Varco TDS-11 AC Top Drive 500 Ton	
YC315 350 Ton	
SJPetro 27 1/2" Rotary /Drwks Driven	
NOV ST- 80 Iron Roughneck and IAT rotating MH	
<b>Mud Pumps</b>	
2 - Continental Emsco FB-1600	
each driven by twin GE-752 DC motors	
<b>Mud System</b>	
2 -Tank system (1,200bbl Capacity)	
2 - National 285P Linear Motion Shale Shakers	
<b>BOP Stack Description</b>	
13-5/8" 5,000# Annular	
13-5/8" 5,000# Double Ram	
<b>Drill String</b>	
8' and 6-1/2" Drill Collars	
5" Drill Pipe	

Secondary Systems	
Baylor Elmagco 6032 Auxiliary Brake	
1-1/4"WireRope 6 x 19 EIP IWRC	
Cold Start air system, primary Rig Air supply, floor hoisting systems	
Fuel Capacity 18,000gal & Water Storage Capacity 500bbl	
Rotary load 550,000# Set Back 330,000	
Tool Pusher and Crew quarters, rig matting boards	
Martin-Decker Type E, Pump SPM & PSI, Top Drive control, SCR system controls	
Manual Tongs, elevators, slips and clamps for Latshaw supplied DS	
Church Energy 3,000PSI Accumulator, 120 gal, 5 station w/remote	
9-Brandt Max 2000 Mud Adjatators	
NOV Brandt Desander 2- 12" Cones w/5 x 6 Centrifugal driven by 100HP elect mtr	
NOV Brandt DeSilter 12-4" Cones w/ 6 x 8 Centrifugal driven by 100HP elect mtr	
Cameron Type FC 4-1/1"6 5,000# x 2-1/16 5,000# Choke Manifold	
NOV Brandt D-1000-C Degasser	
5" 19.5# G-105	
Heavy weight Drill pipe	

**Annular**

**13-5/8" 5,000#WP**

**Double Ram type**

**13-5/8" 5,000#WP Ram**

**13-5/8" 5,000#WP Pipe**

**With required adaptors**

**Mud Cross 13 5/8" 5,000#WP**

**Wing Valve 4 1/16" 5,000#WP**

**HCR Valve 4 1/16" 5,000#WP**

**Choke Blk 4 1/16" 5,000#WP**

**Kill Valve 2 1/16" 5,000#WP**

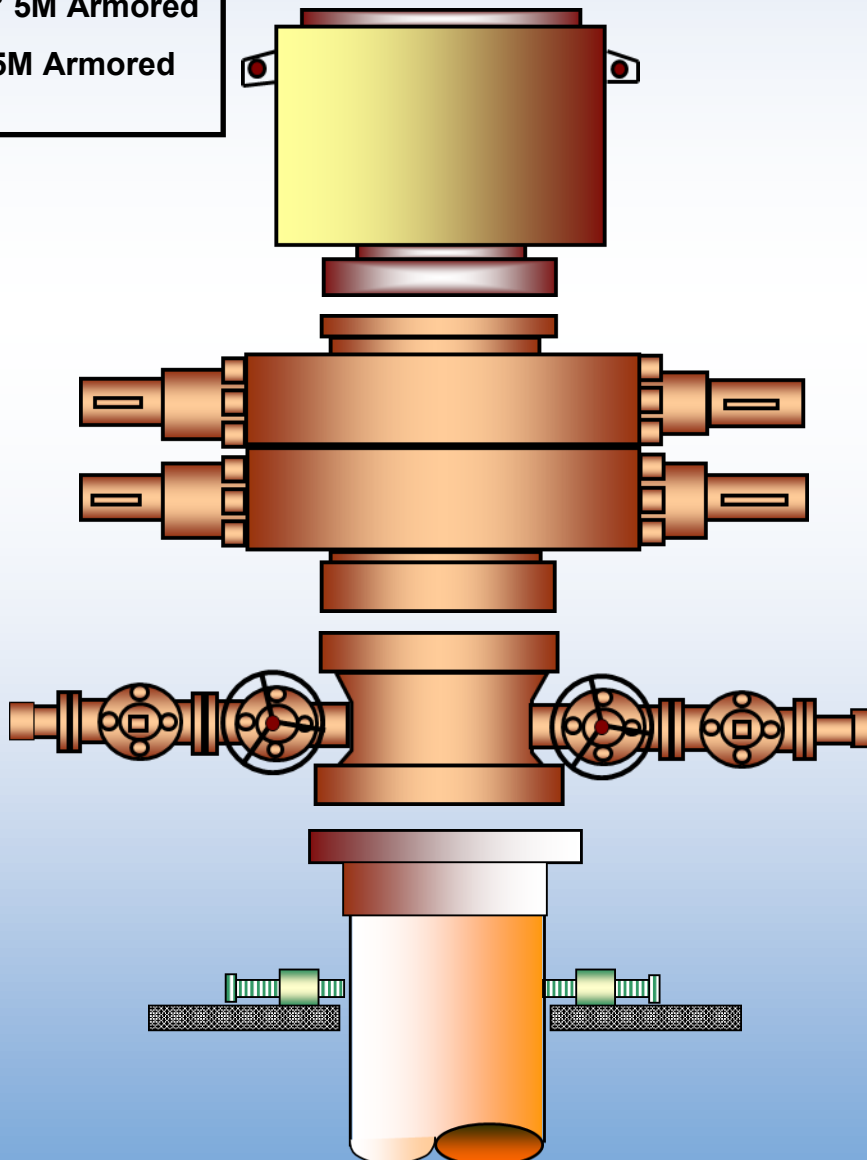
**Check Valve 2 1/16" 5,000#WP**

**Choke Line 4 1/16" 5M Armored**

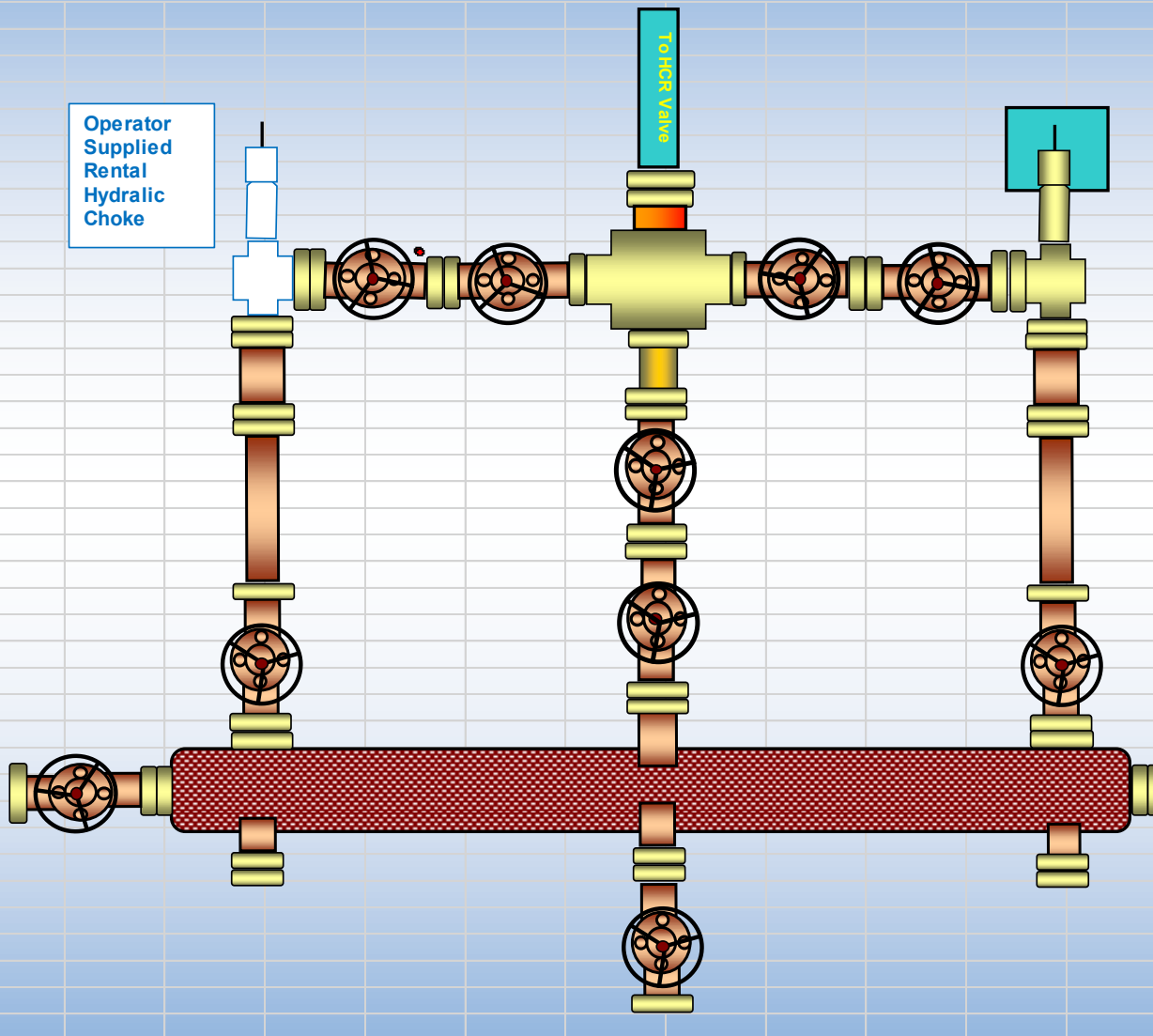
**Kill Line 2 1/16" 5M Armored**

# RIG 4

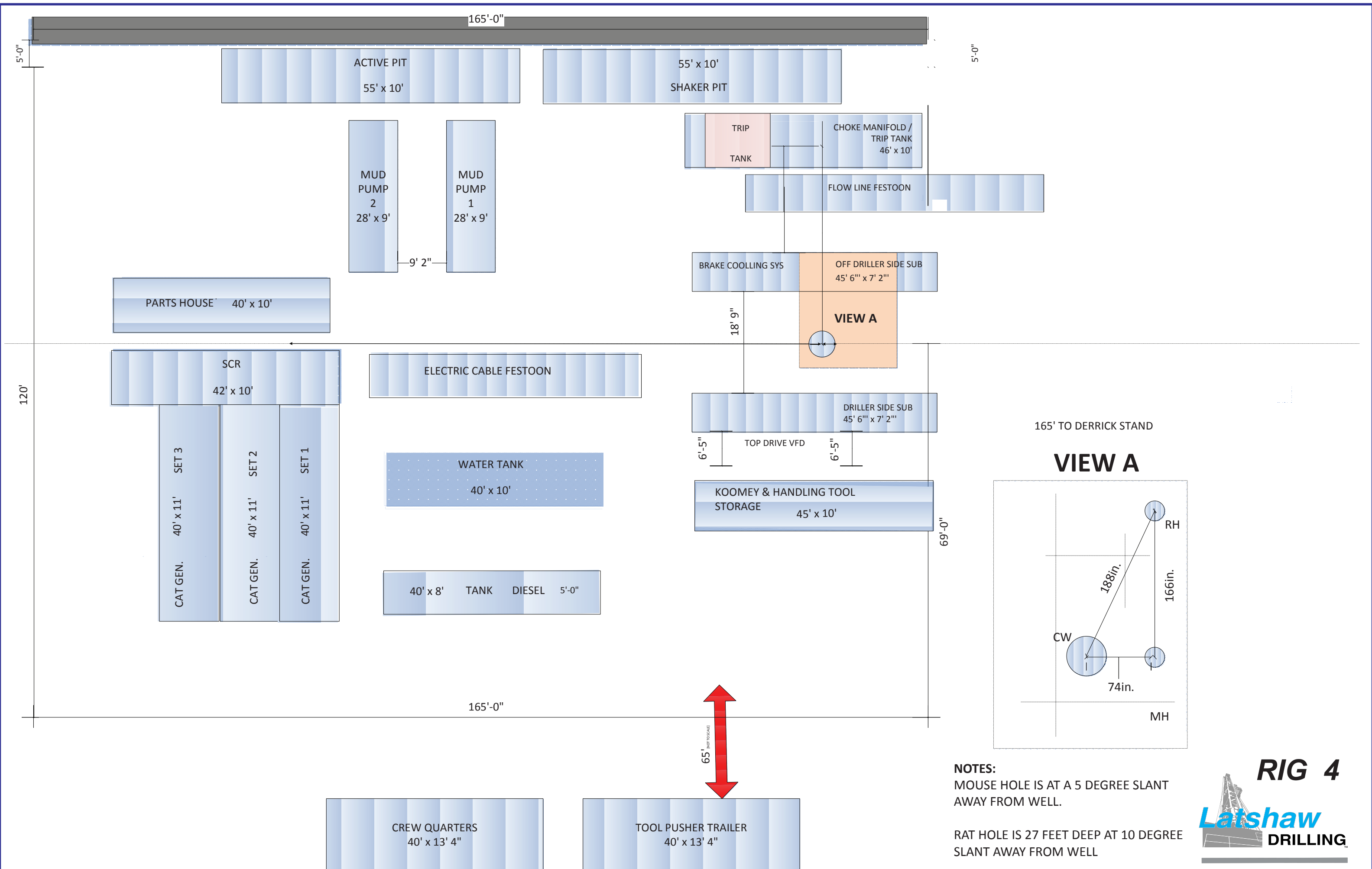
**Latshaw**  
**DRILLING**™



# RIG 4



- 3 - Gate Valve 4 1/16" 5,000#WP
- 7 - Gate Valves 3 1/8" 5,000#WP
- 1 - Gate Valve 2 1/16" 5,000#WP
- 1 - Manual Adjustable Choke 3 1/8" 5,000#WP
- 2 - DSA, 3 1/8" 5,000#WP
- 2 - Spacer Spool, 3 1/8" 5,000#WP
- 1 - Studded Cross (5way) 5,000#WP
- 1 - Instrument Flange and Gauge
- 12" Buffer Chamber
- 3 - Blind Flanges
- 1 - Adapter Spool 2 1/16" 5,000#WP



**NOTES:**  
MOUSE HOLE IS AT A 5 DEGREE SLANT AWAY FROM WELL.  
RAT HOLE IS 27 FEET DEEP AT 10 DEGREE SLANT AWAY FROM WELL

