

RIG 19



Primary Equipment



Major Systems	Secondary Systems
Drawworks National 110-UE 1500HP Low Low rated 605,000# Hoisting Capacity (10) lines. 710,000# Hoisting Capacity (12) lines Driven by (2) GE 752 DC motors	Baylor Elmagco 7040 Auxiliary Brake
Prime Power NOV/ SCR System, 3 Generator Bays, 4 SCR Bays 4 SCR Bays 3-Caterpillar 3512C Dual Fuel Capable W/Kato 1365 KW/ 1950 KVA AC generators	1-3/8" WireRope 6 x 19 EIP IWRC
Mast/Substructure IDS 154' 1,000,000# Hook load with 28.5 Box type with 28.5 Box on Box type Crown Block 6-60" Sheaves 1-3/8" Groove Fastline 1-60" 1-3/8" Groove Walking System	Cold Start air system, primary Rig Air supply, floor hoisting systems
Top Drive - Traveling Block - Pipe Handling Varco TDS 11SA VF AC 500 Ton Skytop Brewster 500 Ton Block SJPetro 27 1/2" Rotary /Drwks Driven Varco ST-80 pipe handling system & IAT rot. MO & IAT rot. MO	Fuel Capacity 18,000gal & Water Storage Capacity 500bbl
Mud Pumps 2 - National 12-P-160 1600HP Triplex 7,500#WP PSI Fluid Ends and delivery system Driven by (2) GE 752 DC motors	Rotary Load 1,000,000# Set Back 600,000#
Mud System 2 - Tank system (1,200bbl Capacity) w 100bbl TT 2 - Brandt 285P linear motion shakers	Tool Pusher and Crew quarters rig matting boards
BOP Stack Description 13 5/8" 5,000#WP Annular 13 5/8" 5,000#WP Double Ram	Martin-Decker Type E, Pump SPM & PSI, Top Drive control, SCR system controls & MU/BO Torque
Drill String 8 " and 6-1/2" Drill Collars 5" Drill Pipe	Manual Tongs, elevators, slips and clamps for Latshaw supplied DS
	Church Energy 3,000PSI Accumulator, 180 gal, 6 station w/remote
	8-NOV Max2000 10HP Mud agitators
	NOV Brandt Desander 3- 10" Cones w/6 x 8 Centrifugal driven by 100HP Motor
	NOV DeSilter 20-4" Cones w/ 6 x 8 Centrifugal driven by 100HP Mtr
	Type FC 4 1/16"10M x 3 1/16" 10M Choke Manifold
	NOV Brandt D-1000-C Degasser
	5" 19.5# G-105 and S-135
	Heavy weight Drill pipe

Annular

13-5/8" 5,000#WP

Double Ram

13 5/8" 5,000#WP Pipe

13 5/8" 5,000#WP Blind

With required adaptors

Mud Cross 13 5/8" 5,000#WP

Wing Valve 4 1/16" 5,000#WP

HCR Valve 4 1/16" 5,000#WP

Choke Blk 4 1/16" 5,000#WP

Kill Valve 3 1/8" 5,000#WP

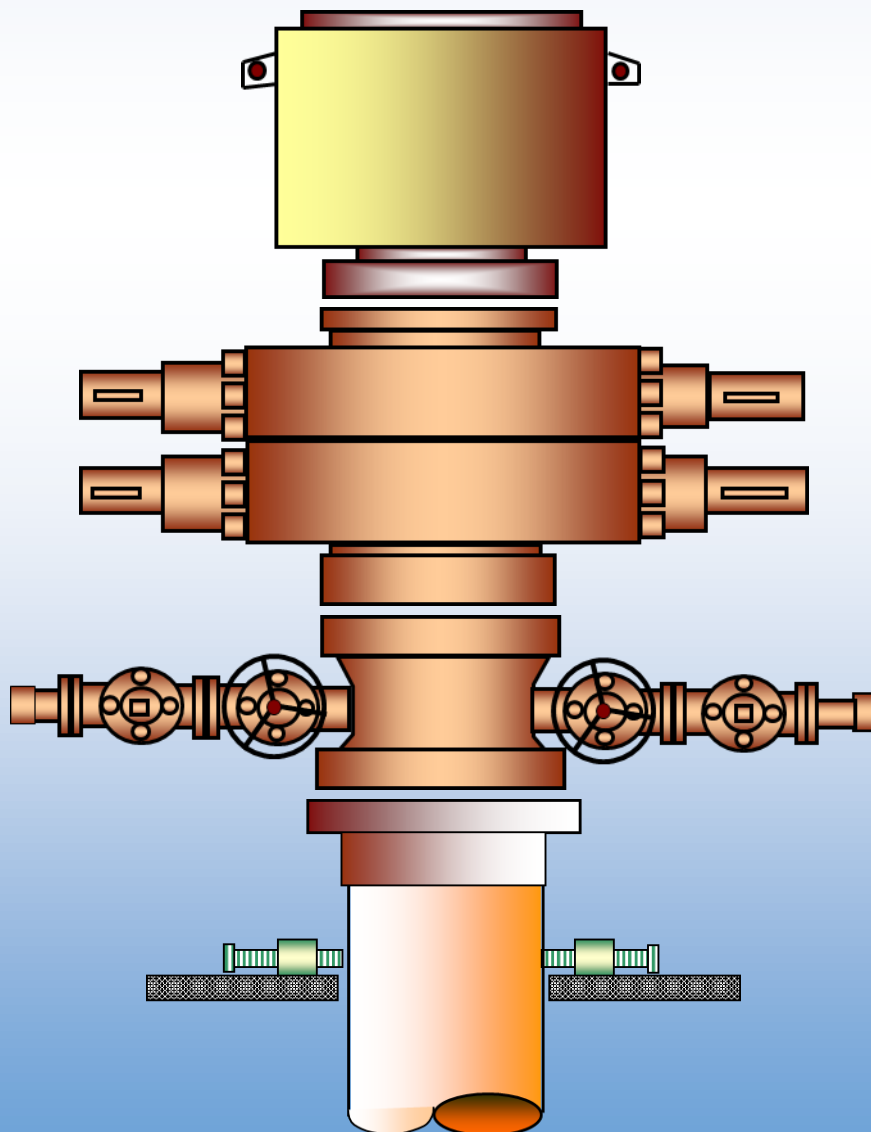
Check Valve 3 1/8" 5,000#WP

Choke Line 4 1/16" 10M Armored

Kill Line 2 1/16" 10M Armored

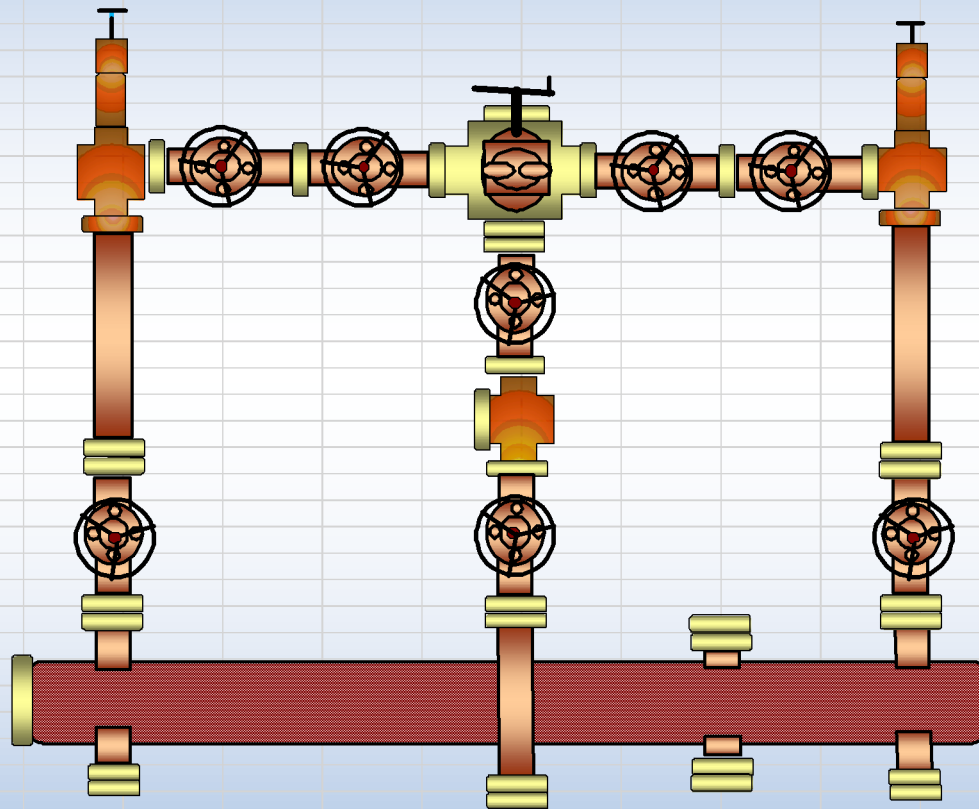
RIG 19

Latshaw
DRILLING

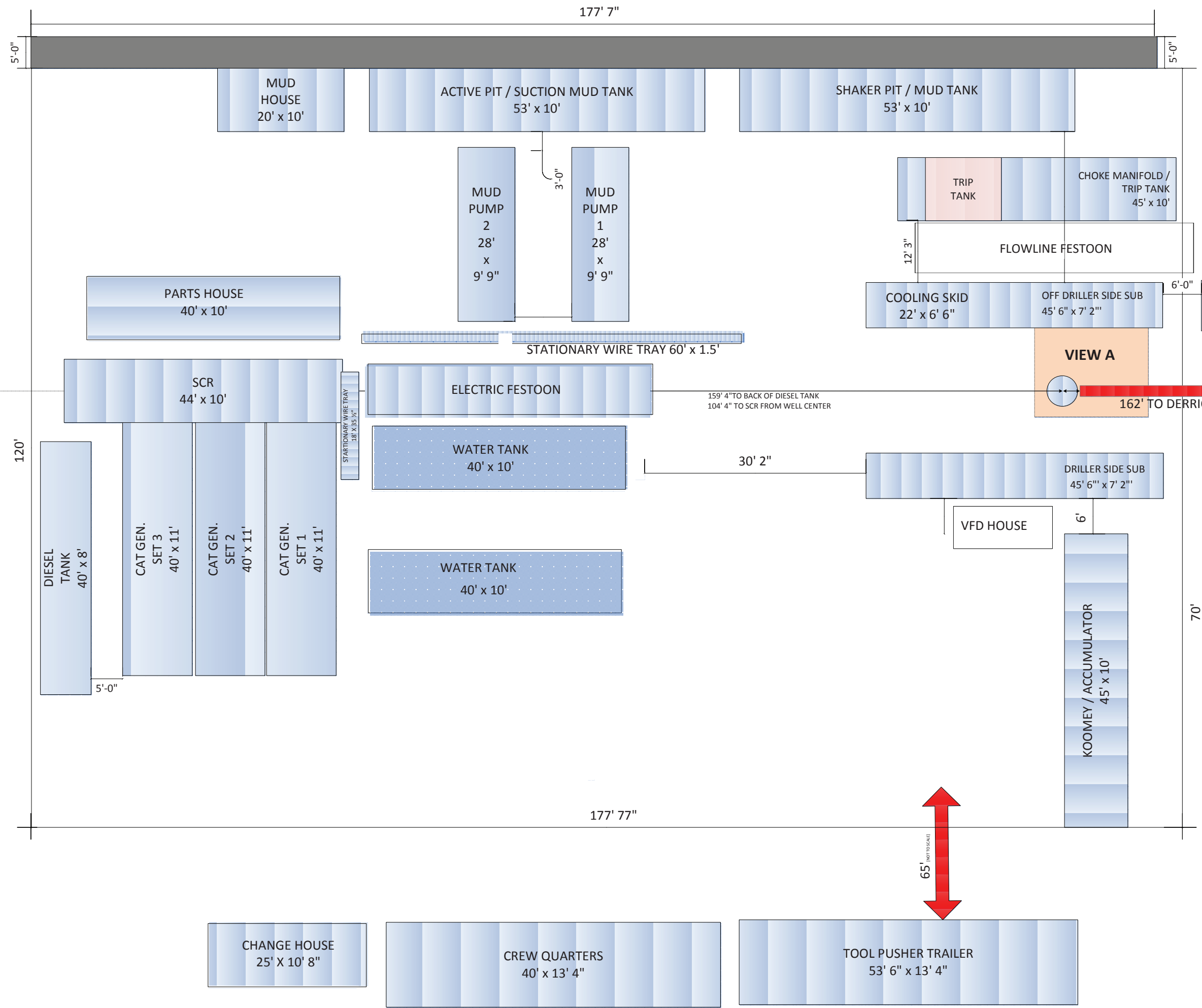


RIG 19

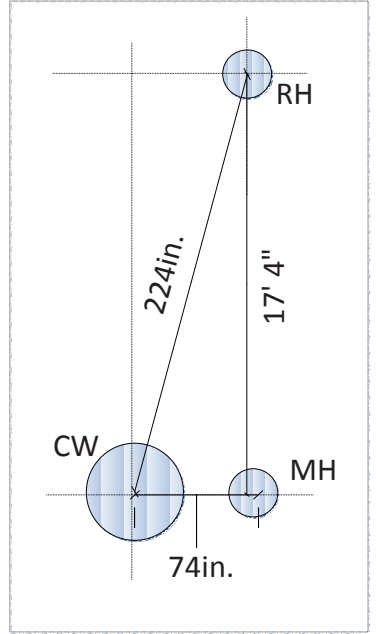
Latshaw
DRILLING™



- 2 - Gate Valve 4 1/16" 10,000#WP
- 4 - Gate Valve 3 1/16" 10,000#WP
- 2 - Gate Valve 3 1/8" 5,000#WP
- 1 - Gate Valve 2 1/16" 10,000#WP
- 1 - Manual Adjustable Choke 3 1/10"
10,000#WP
- 1 - Studded Tee(3way) 10,000#WP
- 1 - Studded Cross (5way) 10,000#WP
- 1 - Instrument Flange and Gauge 10M
10 3/4" Buffer Chamber
- 4 - DSA's, 5 Blind Flanges
- 1 - Adapter Spool 2 1/16" 10,000#WP

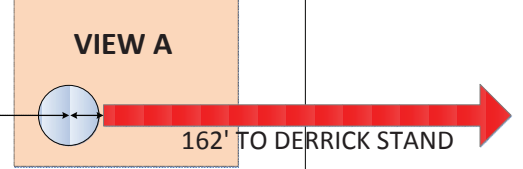


VIEW A



NOTES:
 MOUSE HOLE IS AT A 5 DEGREE SLANT AWAY FROM WELL.

RIG 19 HAS A CANRIG HYDRAULIC CATWALK



RIG 19

