

RIG 11



Primary Equipment



Major Systems	Secondary Systems
Drawworks OWI-National (type) 110UE 1500HP Low Low rated 605,00# single line pull Hoisting Capacity (10) lines Driven by (2) GE 752 DC motors	Baylor Elmagco 7040 Auxiliary Brake 1-3/8" WireRope 6 x 19 EIP IWRC
Prime Power Omron/ SCR System, 3 Generator Bays, 3 SCR Bays 3-Caterpillar 3512B w/ Kato 1365 KW AC Gen Sets	Cold Start air system, primary Rig Air supply, hydraulic floor hoisting Fuel Capacity 18,000gal & Water Storage Capacity 500bbl
Mast/Substructure IDS 142' 750,000# Hook load with 25' Box on Box type Crown Block 6-62" Sheaves 1-3/8" Groove Fastline 1-55" 1-3/8" Grooved Walking System	Rotary load 750,000# Set Back 450,000# Tool Pusher and Crew quarters rig matting boards
Top Drive - Traveling Block - Pipe Handling NOV TDS 11SA VF AC 500Ton Skytop Brewster 400 Ton Block 27 1/2" Rotary table / Hydraulic motor driven Varco ST- 80 Iron Roughneck and IAT rotating MH Walking System	Martin-Decker Type E, Pump PSI, Top Drive control, SCR system controls & MU/BO Torque Manual Tongs, elevators, slips and clamps for Latshaw supplied DS
Mud Pumps 2 - American Block K-1600 1600HP Triplex 7,500#WP PSI Fluid Ends and delivery system Driven by (2) GE 752 DC motors	Church Energy 3,000PSI Accumulator, 180 gal, 6 station w/remote 6-NOV Max2000 10HP Mud agitators
Mud System 2 - Tank system (1,200bbl Capacity) w 100bbl TT 2 - National 285P Linear Motion Shale Shakers	NOV Brandt Desander 3- 10" Cones w/6 x 8 Centrifugal driven by 100HP Motor NOV DeSilter 16-4" Cones w/ 6 x 8 Centrifugal driven by 100HP Mtr
BOP Stack Description 13 5/8" 5,000#WP Annular 13 5/8"10,000#WP Double Ram 13 5/8"10,000#WP Single Ram	Cameron Type FC 4 1/16"10,000#WP x 3 1/16" 10,000#WP Choke Manifold NOV Brandt D-1000-C Degasser
Drill String 8 " and 6-1/2" Drill Collars 5" Drill Pipe	5" 19.5# G-105 and S-135 Heavy weight Drill pipe

Annular

13-5/8" 5,000#WP

Double Ram

13 5/8" 10,000#WP Pipe

13 5/8" 10,000#WP Blind

Single Ram

13 5/8" 10,000#WP Pipe

With required adaptors

Mud Cross 13 5/8" 10,000#WP

Wing Valve 4 1/16" 10,000#WP

HCR Valve 4 1/16" 10,000#WP

Choke Blk 4 1/16" 10,000#WP

Kill Valve 2 1/16" 10,000#WP

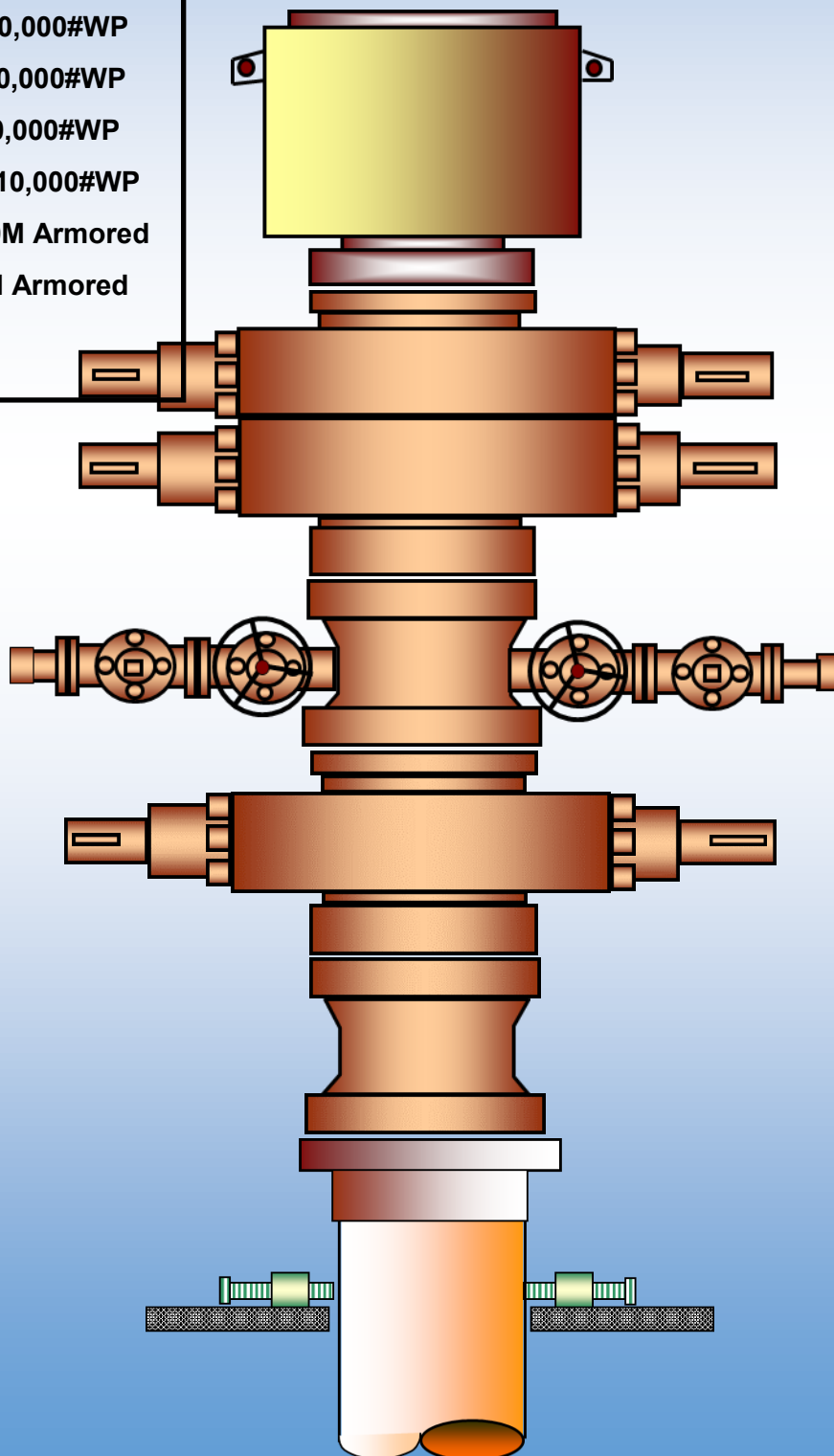
Check Valve 2 1/16" 10,000#WP

Choke Line 4 1/16" 10M Armored

Kill Line 2 1/16" 10M Armored

RIG 11

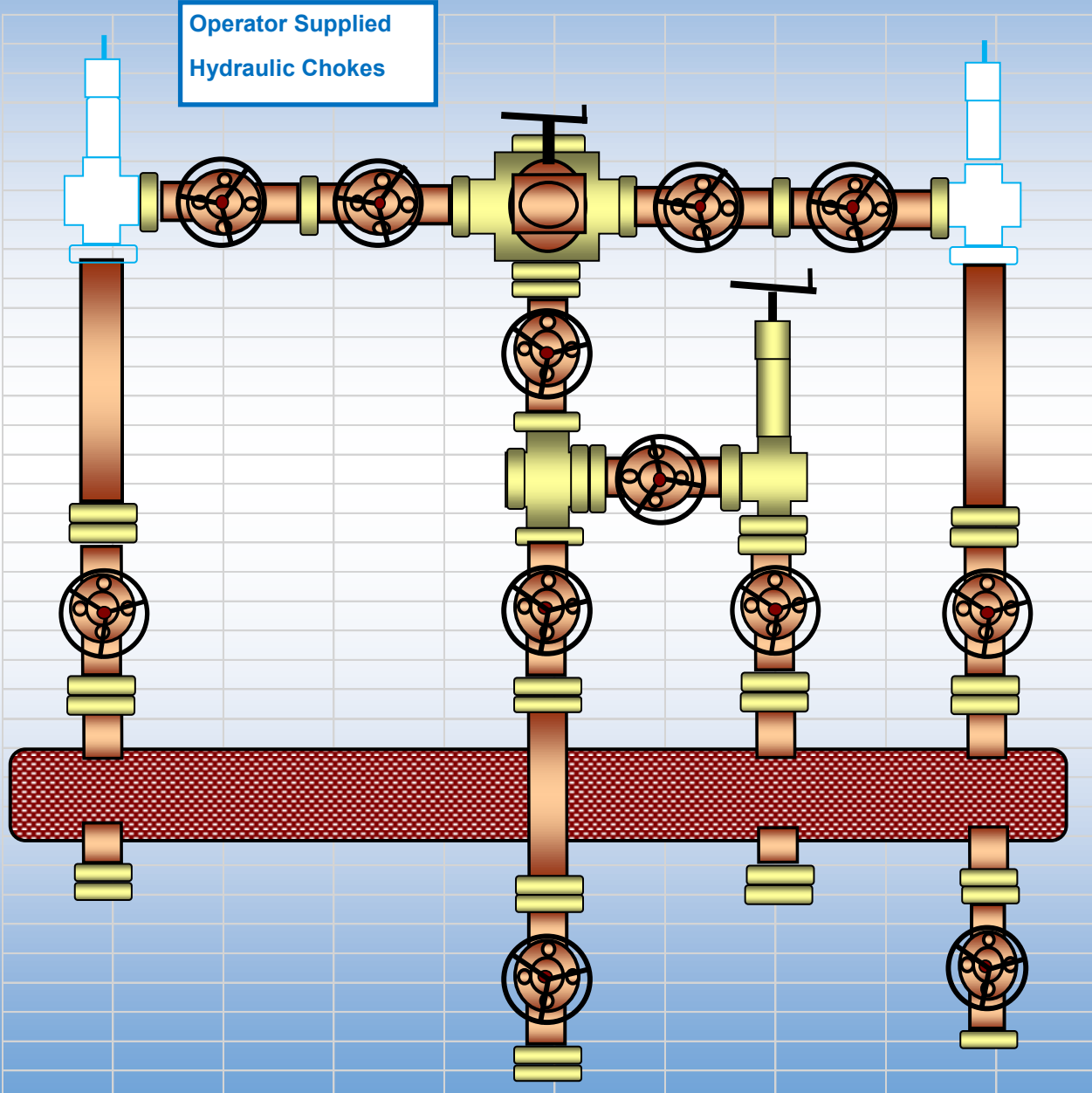
Latshaw
DRILLING™



RIG 11



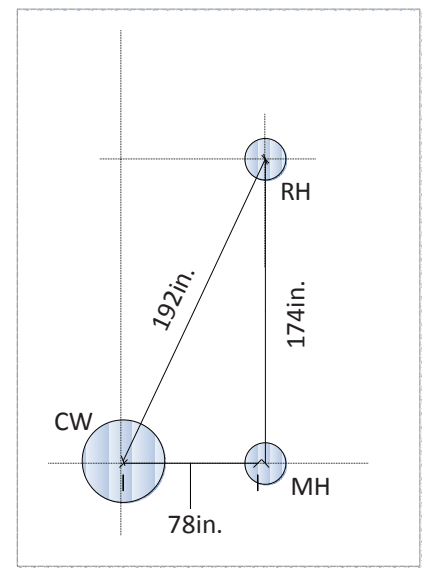
Operator Supplied
Hydraulic Chokes



- 3 - Gate Valve 4 1/16" 10,000#WP
- 5 - Gate Valve 3 1/16" 10,000#WP
- 2 - Gate Valves 4 1/16" 5,000#WP
- 3 - Gate Valve 3 1/8" 5,000#WP
- 1 - Gate Valve 2 1/16" 10,000#WP
- 1 - Manual Adjustable Choke 3 1/10" 10,000#WP
- 1 - DSA, 3 1/16" 10,000#WP
- 2 - Spacer Spool, 3 1/8" 5 000#WP
- 1 - Spool, flange adp 2 1/16" 10M
- 1 - Studded Cross (5way) 5,000#WP
- 1 - Tee Studded
- 1 - Instrument Flange and Gauge
- 10 3/4" Buffer Chamber
- 3 - Blind Flanges, 4 1/16" & 3 1/8" 5M
- 3 - Flanges, 4 1/16" 5M & 10M



VIEW A



NOTES:
 MOUSE HOLE IS AT A 5 DEGREE SLANT AWAY FROM WELL.
 RAT HOLE IS 27 FEET DEEP AT 10 DEGREE SLANT AWAY FROM WELL

RIG 11

