

# RIG 13



## Primary Equipment



Major Systems	Secondary Systems
<b>Drawworks</b> Continental Emsco D-3 Type II 1,000HP Low Low rated 525,00# single line pull Hoisting Capacity ( 10 ) lines Driven by (2) GE 752 DC motors	Baylor 6032 Elmagco Brake
<b>Prime Power</b> Omron/ SCR System, 3 Generator Bays, 3 SCR Bays 3-Caterpillar 3512B w/ Kato 1365 KW AC Gen Sets	1-1/4" WireRope 6 x 19 EIP IWRC
<b>Mast/Substructure</b> IDS 142' 750,000# Hook load with 20' Box type with 25' Box on Box type Crown Block 6-54" Sheaves 1-1/4" Groove Fastline 1-60" 1-1/4" Grooved <b>Walking Systems</b>	Cold Start air system, primary Rig Air supply, floor hoisting systems
<b>Top Drive - Traveling Block - Pipe Handling</b> NOV TDS 11SA VF AC 500Ton Ideco 500 Ton Block SJPetro 27 1/2" Rotary /Drwks Driven Varco ST- 80 Iron Roughneck & IAT rotating MH IAT rotating MH	Fuel Capacity 18,000gal & Water Storage Capacity 500bbl
<b>Mud Pumps</b> 2 -NOV FD-1600 1600 HP Triplex 5,000#WP PSI Fluid Ends and delivery system Driven by (2) GE 752 DC motors	Rotary load 750,000# Set Back 450,000#
<b>Mud System</b> 2 - Tank system (1,200bbl Capacity) w 100bbl TT 2 - National 285P Linear Motion Shale Shakers	Tool Pusher and Crew quarters rig matting boards
<b>BOP Stack Description</b> 11" 5,000#WP Annular 11" 5,000#WP Double Ram	Martin-Decker Type E, Pump SPM & PSI, Top Drive control, SCR system controls & MU/BO Torque
<b>Drill String</b> 8 " and 6-1/2" Drill Collars 5" Drill Pipe	Manual Tongs, elevators, slips and clamps for Latshaw supplied DS
	Church Energy 3,000PSI Accumulator, 180 gal, 6 station w/remote
	8-NOV Max2000 10HP Mud agitators
	NOV Brandt Desander 3- 10" Cones w/6 x 8 Centrifugal driven by 100HP Motor
	NOV DeSilter 20-4" Cones w/ 6 x 8 Centrifugal driven by 100HP Mtr
	Cameron Type FC 3 1/16"5,000#WP x 2 1/16" 5,000#WP Choke Manifold
	NOV Brandt D-1000-C Degasser
	5" 19.5# G-105 and S-135
	Heavy weight Drill pipe

Annular

11" 5,000#WP

Double Ram

11" 5,000#WP Pipe

11" 5,000#WP Blind

With required adaptors

Mud Cross 11" 5,000#WP

Wing Valve 4 1/16" 5,000#WP

HCR Valve 4 1/16" 5,000#WP

2-Kill Valves 2 1/16" 5,000#WP

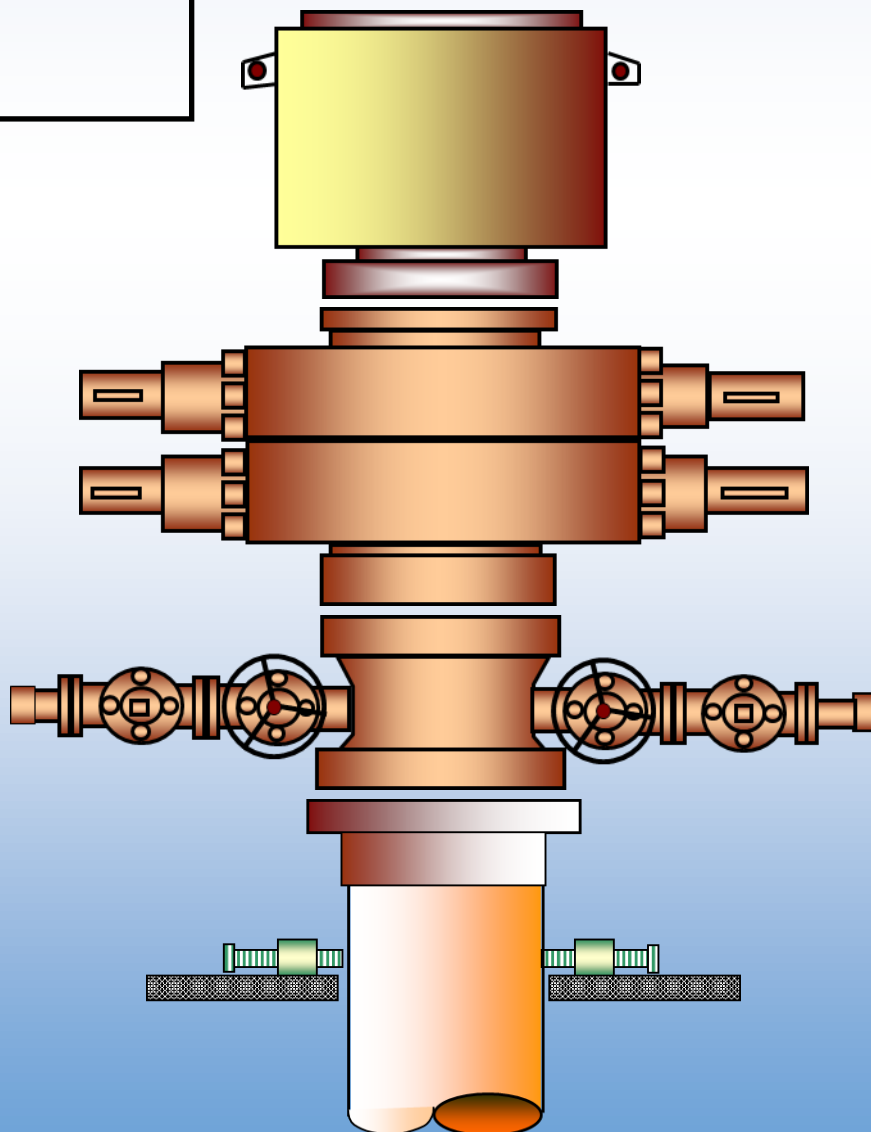
Check Valve 2 1/16" 5,000#WP

Choke Line 4 1/16" 5M Armored

Kill Line 2 1/16" 5M Armored

# RIG 13

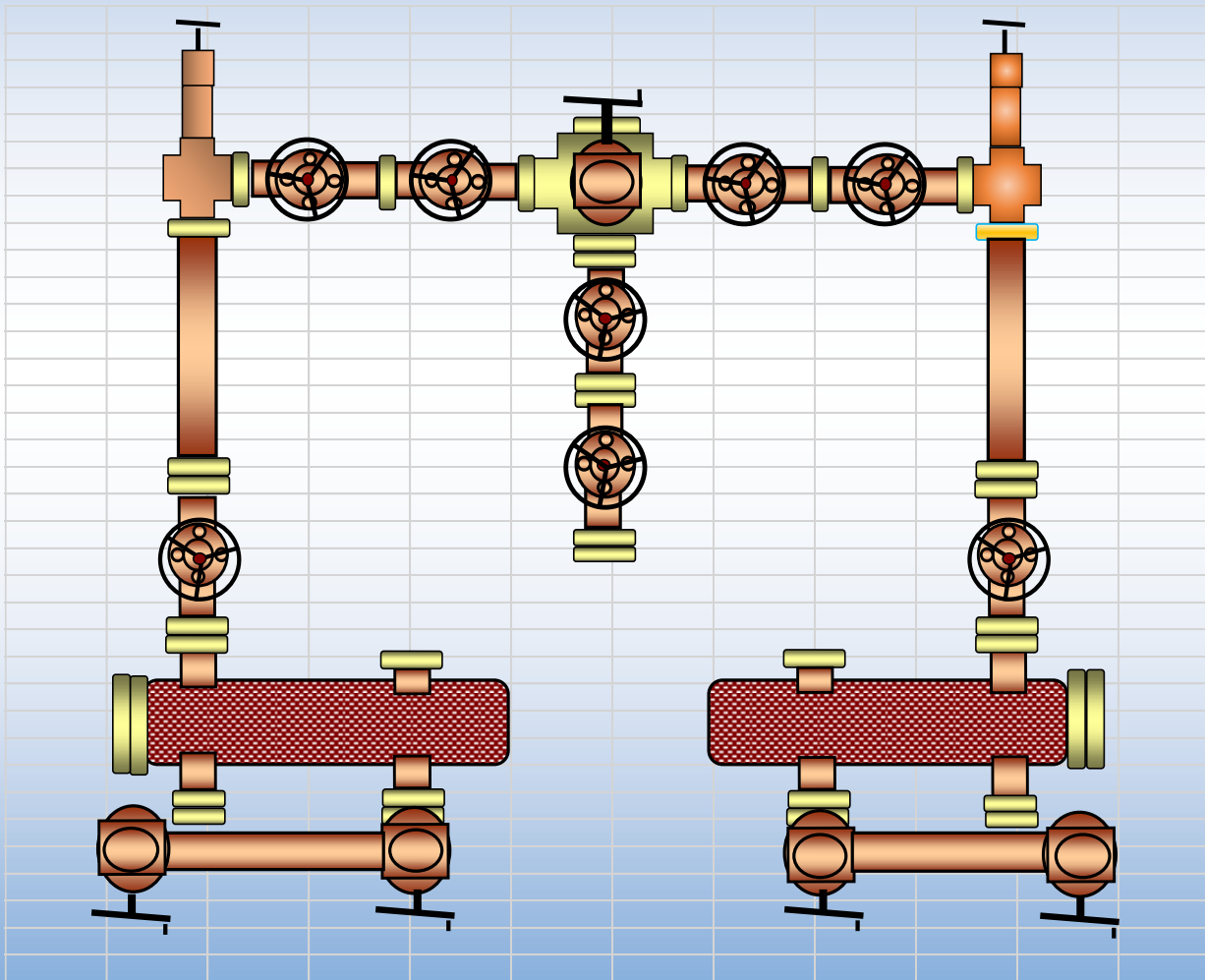
*Latshaw*  
DRILLING™



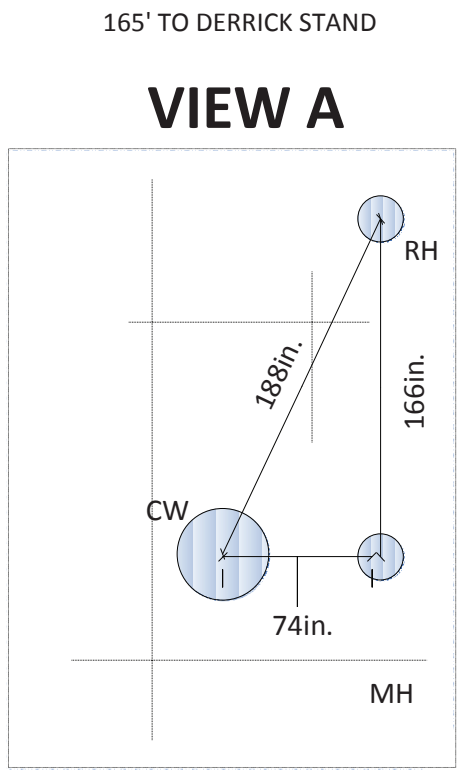
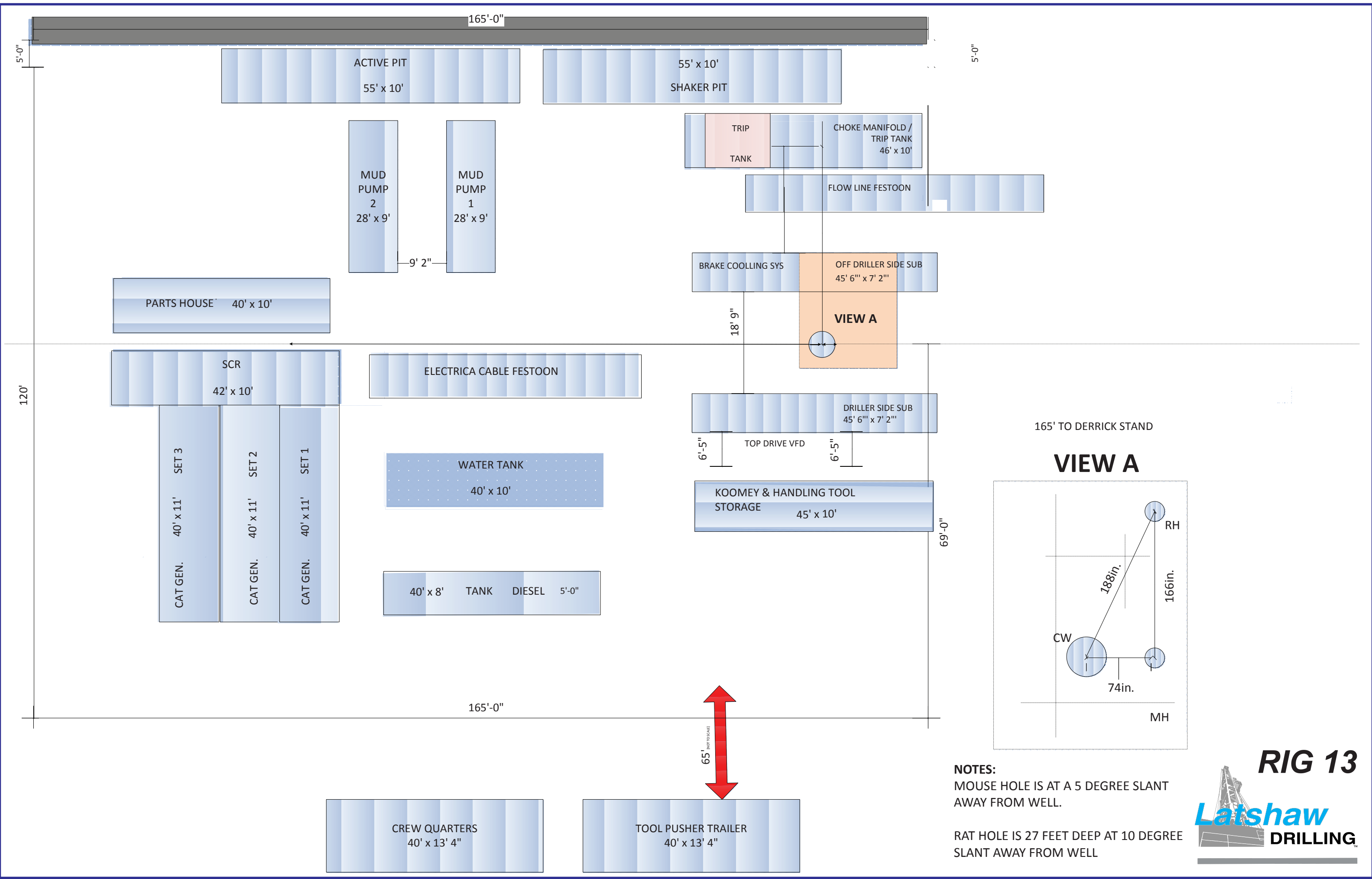
# RIG 13



Operator Supplied  
Hydraulic Chokes



- 8- Gate Valve 3 1/8" 5,000#WP
- 2 - Gate Valve 4 1/16" 5,000#WP
- 1- Gate Valve 2 1/16" 5,000#WP
- 2 - Manual Adjustable Choke 3 1/10"  
5,000#WP
- 2 - Spacer Spool, 3 1/8" 5 000#WP
- 1 - Studded Cross (5 way) 5M
- 1 - Instrument Flange and Gauge 5M  
2-10 3/4" Buffer Chambers
- 3 - Blind Flanges, 3 1/8" 5M
- 1 - Bull plug/Hammer union Flange  
3 1/8"5M



**NOTES:**  
 MOUSE HOLE IS AT A 5 DEGREE SLANT AWAY FROM WELL.  
 RAT HOLE IS 27 FEET DEEP AT 10 DEGREE SLANT AWAY FROM WELL