



Primary Equipment



Major Systems	
Drawworks	
NOV ADS-10SD 1500HP AC drwks with ReGen Braking capacity NOV Software limited 625,000# Hoisting Capacity (10) lines w/2-AC 1150HP motor input/Gear drive	
Prime Power	
NOV DrillForce LT VFD "Ideal" System with Amphoin Drillers control cabin 3-Caterpillar 3512-C w/Kato 1265 KW AC Generator Dual Fuel Capable	
Mast/Substructure	
NOV 142' 750,000# Hook load, Slingshot Design 25' Sub w/RKB 21.8' Crown Block 5-50" Sheaves 1-3/8" Groove Fastline 1-60" 1-3/8" Groove 2- 42" deadline sheaves	
Top Drive - Traveling Block - Pipe Handling	
NOV TDS 11SA AC 500 Ton Top Drive NOV 500 Ton Traveling Block NOV 37 1/2" Rotary Table w/400HP AC motor NOV ST-80CL pipe handling system CanRig Hydraulic Catwalk	
Mud Pumps	
2-National 12-P-160 1600HP Triplex, 7500PSI w/7,500#WP Fluid ends and delivery system each driven by 2-1150Hp AC motors	
Mud System	
2 -Tank system (1,314bbl Capacity), w/100bbl Trip Tank 2 -NOV King Cobra Hydro Shale Shakers	
BOP Stack Description	
13 5/8" 5,000# Annular 13 5/8" 10,000# Double Ram 13 5/8" 10,000# Single Ram	
Drill String	
8' and 6-1/2" Drill Collars 5" Drill Pipe	

Secondary Systems	
	Air/ Actuated, Park Disc
	1-3/8"WireRope 6 x 19 EIP IWRC
	Cold Start air system, primary Rig Air supply, floor hoisting systems
	Fuel Capacity 20,000gal & Water Storage Capacity 400bbl
	Rotary load 750,000# Set Back 500,000#
	Tool Pusher and Crew quarters, rig matting boards
	NOV Steel Toe Walking systems incorporated within lower substructure base
	Manual Tongs, elevators, slips and clamps for Latshaw supplied DS
	NOV BOP Control Model L200- T6EA30CE2 3,000PSI Accumulator, 180 gal, 6 station w/remote
	7-NOV MA-10 10HP Mud Agitators
	NOV DSN-3V-10CTX 3-10" cone Desander 1500gpm
	NOV Model DSLR-20GG-4CTX Desilter 20-4" cone Desilter
	Type FC 4-1/1"6 10,000# x 3- 1/8"10,000# Choke Manifold
	NOV Model DG-10 Degasser
	5" 19.5# G-105 & S135
	Heavy weight Drill pipe

Annular

13-5/8" 5,000#WP

Double Ram

13 5/8" 10,000#WP Pipe

13 5/8" 10,000#WP Blind

Single Ram

13 5/8" 10,000#WP Pipe

With required adaptors

Mud Cross 13 5/8" 10,000#WP

Wing Valve 4 1/16" 10,000#WP

HCR Valve 4 1/16" 10,000#WP

Choke Blk 4 1/16" 10,000#WP

Kill Valve 2 1/16" 10,000#WP

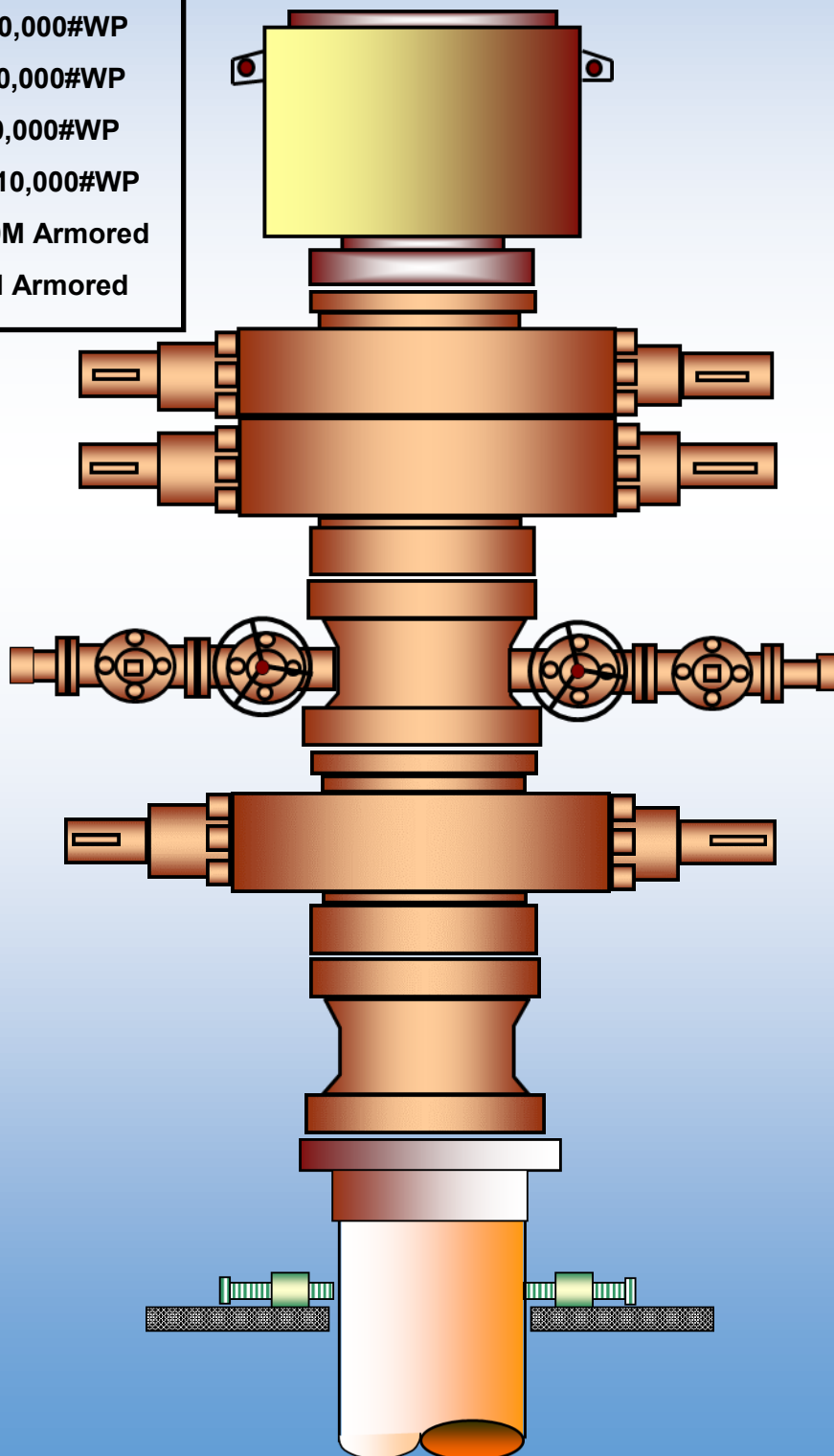
Check Valve 2 1/16" 10,000#WP

Choke Line 4 1/16" 10M Armored

Kill Line 2 1/16" 10M Armored

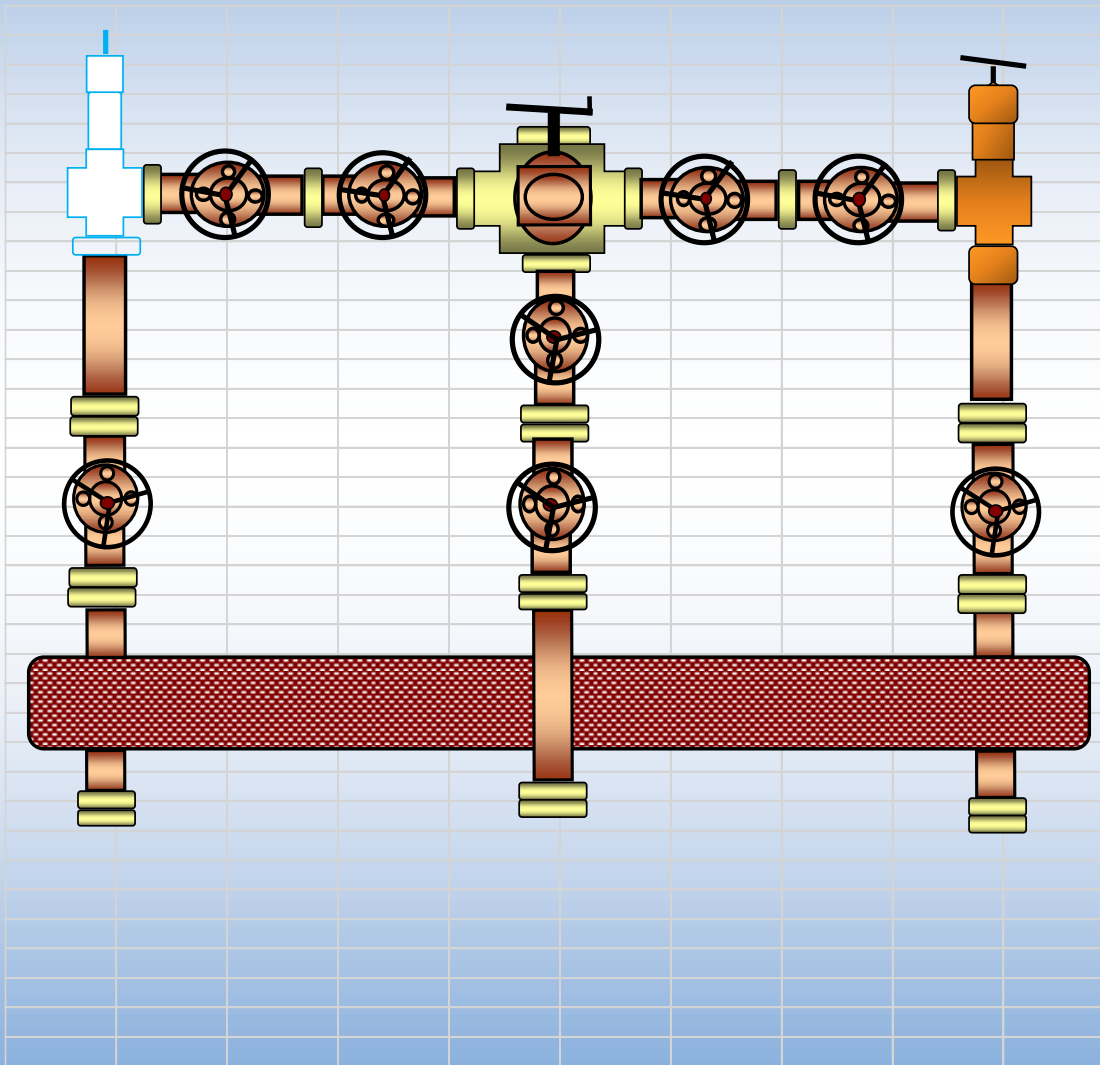
RIG 44

Latshaw
DRILLING



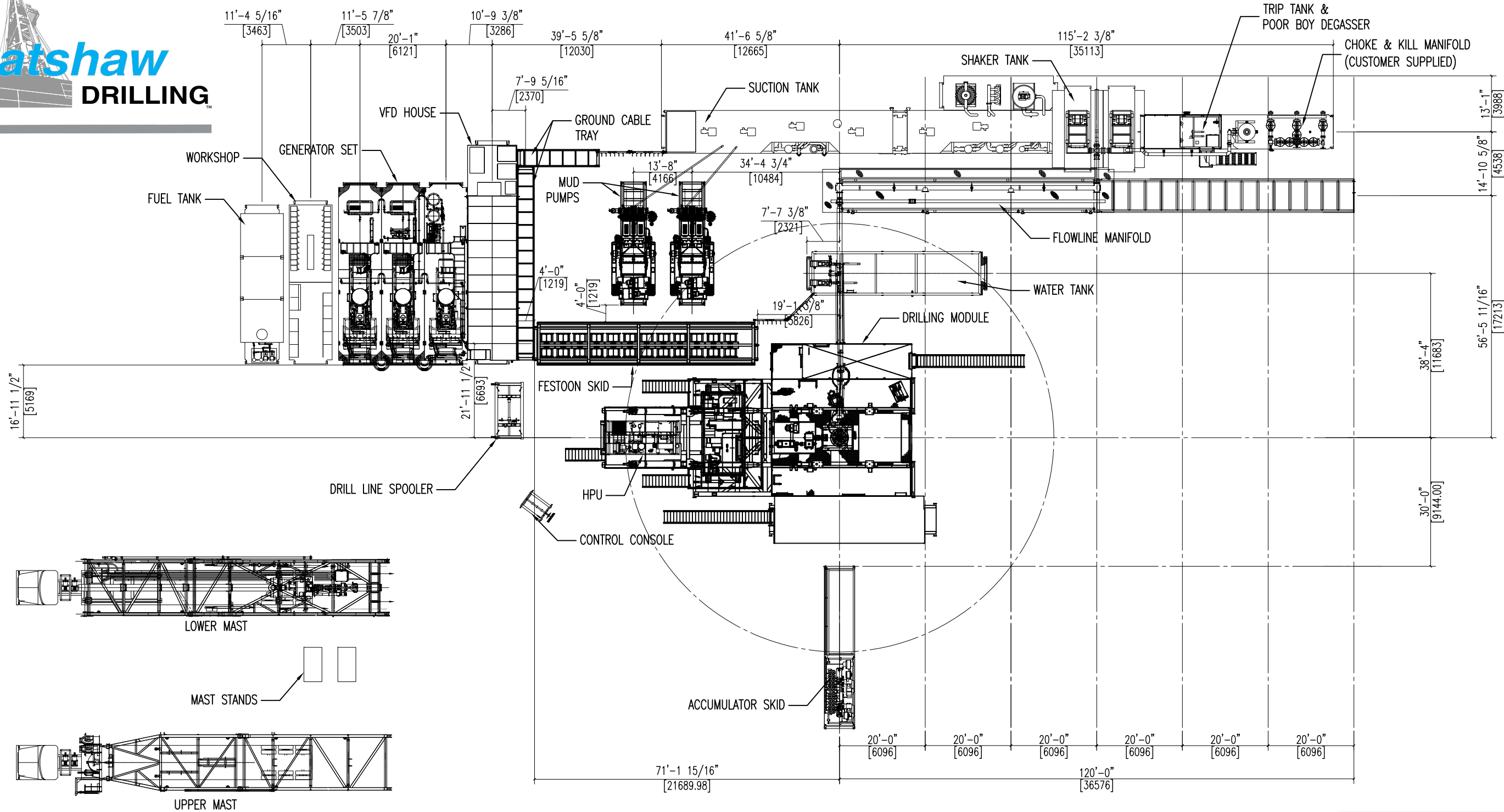
Operator Supplied
Hydraulic Chokes

RIG 44



- 2- Gate Valve 4 1/16" 10,000#WP
- 4 - Gate Valve 3 1/16" 10,000#WP
- 2 - Gate Valves 3 1/8" 10,000#WP
- 1- Gate Valve 2 1/16" 10,000#WP
- 1 - Manual Adjustable Choke 3 1/10" 10,000#WP
- 1 - DSA, 3 1/16" 10,000#WP
- 1- Spacer Spool, 3 1/8" 10,000#WP
- 1 - Studded Cross (5way) 10,000#WP
- 1 - Instrument Flange and Gauge
- 10 3/4" Buffer Chamber

IF IN DOUBT...ASK!



- NOTES:
- Drilling Module should be located at Well #2 during rig up to avoid interference with backyard equipment while rig floor is in the lowered position.
 - Choke Manifold will be supplied by the customer; Pictured item is NOV's choke manifold.
 - General Arrangement is preliminary and for reference purposes only. Specific locations of equipment relative to well center and other equipment subject to change. Unreleased assemblies subject to design changes.

04					
03					
02					
01	09-23-14	ISSUED FOR CONSTRUCTION	CDH	YLW	CDH
REV	DATE	DESCRIPTION	MADE	CHKD	APRD

DIMENSIONS & TOLERANCES

FRACTIONAL $\pm 1/16$
CASTINGS $\pm 1/16$
ANGULAR $\pm 1^\circ$
0.0 ± 0.030
0.00 ± 0.015
0.000 ± 0.005

POSITION ± 0.005 in
CONCENTRICITY $\odot 0.005$ in TIR
STRAIGHTNESS $- 0.005$ in/5 inches
FLATNESS $\nabla 0.005$ in/5 inches
PARALLELISM $// 0.010$ in/5 inches
PERPENDICULARITY $\perp 0.010$ in/10 inches

PROJECT:
CUSTOMER:
ITP:
SHOP W/O:

DATE:



THIS DOCUMENT CONTAINS PROPRIETARY AND CONFIDENTIAL INFORMATION WHICH BELONGS TO NATIONAL OILWELL VARCO, L.P., ITS AFFILIATES OR SUBSIDIARIES (ALL COLLECTIVELY REFERRED TO HEREINAFTER AS "NOV"). IT IS LOANED FOR LIMITED PURPOSES ONLY AND REMAINS THE PROPERTY OF NOV. REPRODUCTION, IN WHOLE OR IN PART, OR USE OF THIS DESIGN OR DISTRIBUTION OF THIS INFORMATION TO OTHERS IS NOT PERMITTED WITHOUT THE EXPRESS WRITTEN CONSENT OF NOV. THIS DOCUMENT IS TO BE RETURNED TO NOV UPON REQUEST AND IN ANY EVENT UPON COMPLETION OF THE USE FOR WHICH IT WAS LOANED. THIS DOCUMENT AND THE INFORMATION CONTAINED AND REPRESENTED HEREIN IS THE COPYRIGHTED PROPERTY OF NOV.

RIG PACKAGE GROUP
11000 CORPORATE CENTRE DR.
HOUSTON, TEXAS 77041

TITLE:
RIG GENERAL ARRANGEMENT
IDEAL RIG - 120' SINGLE ROW


SCALE: PROJECTION: SIZE: D MAIN PART:

DRAWING NUMBER:
11042514-GAD

SHEET:
1 of 3
REVISION:
01

DWG NO	11042514-GAD	SH	2
--------	--------------	----	---



SCALE:	PROJECTION: 	SIZE: D	MAIN PART:
DRAWING NUMBER: 11042514-GAD			SHEET: 2 of 3 REVISION: 01

