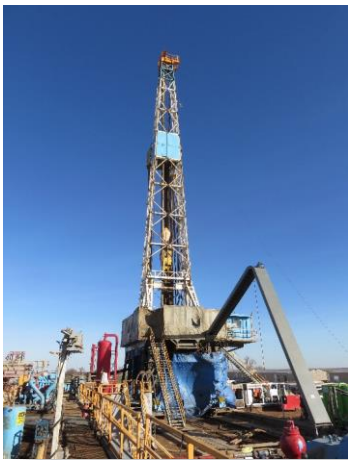


RIG 24



Primary Equipment



Major Systems	Secondary Systems
Drawworks National 610-E 750HP Low Low rated 405,000# Hoisting Capacity (10) lines. Driven by GE 752 DC motor	Wichita 325 air operated/water cooled disc brake 1-1/4" WireRope 6 x 19 EIP IWRC
Prime Power Ross Hill/ SCR System,3 Generator Bays, 4 SCR 4 SCR Bays, 1600Amp 3-Caterpillar 3508's w Kato 1000KW AC Generators	Cold Start air system, primary Rig Air supply, floor hoisting systems Fuel Capacity 18,000gal & Water Storage Capacity 500bbl
Mast/Substructure DSI 142' 650,000# Hook load, Slingshot Design 22.5' Sub w/RKB 19.5' Crown Block 6-50" Sheaves 1-1/4" Groove Fastline 1-60" 1-1/4" Groove Hydraulic jack Skidding system	Rotary Load 650,000# Set Back 400,000# Tool Pusher and Crew quarters rig matting boards
Top Drive - Traveling Block - Pipe Handling Varco TDS10SA VF AC 250 Ton YC225 250 Ton Traveling Block Emsco 27 1/2" Rotary /Drwks Driven pipe handling system	Martin-Decker Type E, Pump SPM & PSI, Top Drive control, SCR system controls & MU/BO Torque Manual Tongs, elevators, slips and clamps for Latshaw supplied DS
Mud Pumps 2 -RSF1000 1000HP Triplex 5,000#WP PSI Fluid Ends and delivery system Driven by GE 752 DC motors	3,000PSI Accumulator, 120 gal 5 station w/remote 5-Oilworks 15HP agitators
Mud System 2 - Tank system (1,000bbl active Capacity) w w 100bbl TT 2-Derrick FLC-504 Shale Shakers	Derrick Desander 2- 12" Cones w/6 x 8 Centrifugal driven by 100HP Motor Derrick 12-4" Cones w/ 6 x 8 Centrifugal driven by 100HP Mtr
BOP Stack Description 11" 5,000#WP Annular 11" 5,000#WP Double Ram	Type FC 4 1/16" 5M x 3 1/8" 5M Choke Manifold Derrick Vaccu Flow 1200 Degasser
Drill String 8 " and 6-1/2" Drill Collars 4 1/2" Drill Pipe	4.5" 16.6# G-105 and S-135 Heavy weight Drill pipe

Annular

11" 5,000#WP

Double Ram

11" 5,000#WP Pipe

11" 5,000#WP Blinds

With required adaptors

Mud Cross 11" 5,000#WP

Wing Valve 4 1/16" 5,000#WP

HCR Valve 4 1/16" 5,000#WP

2-Kill Valves 2 1/16" 5,000#WP

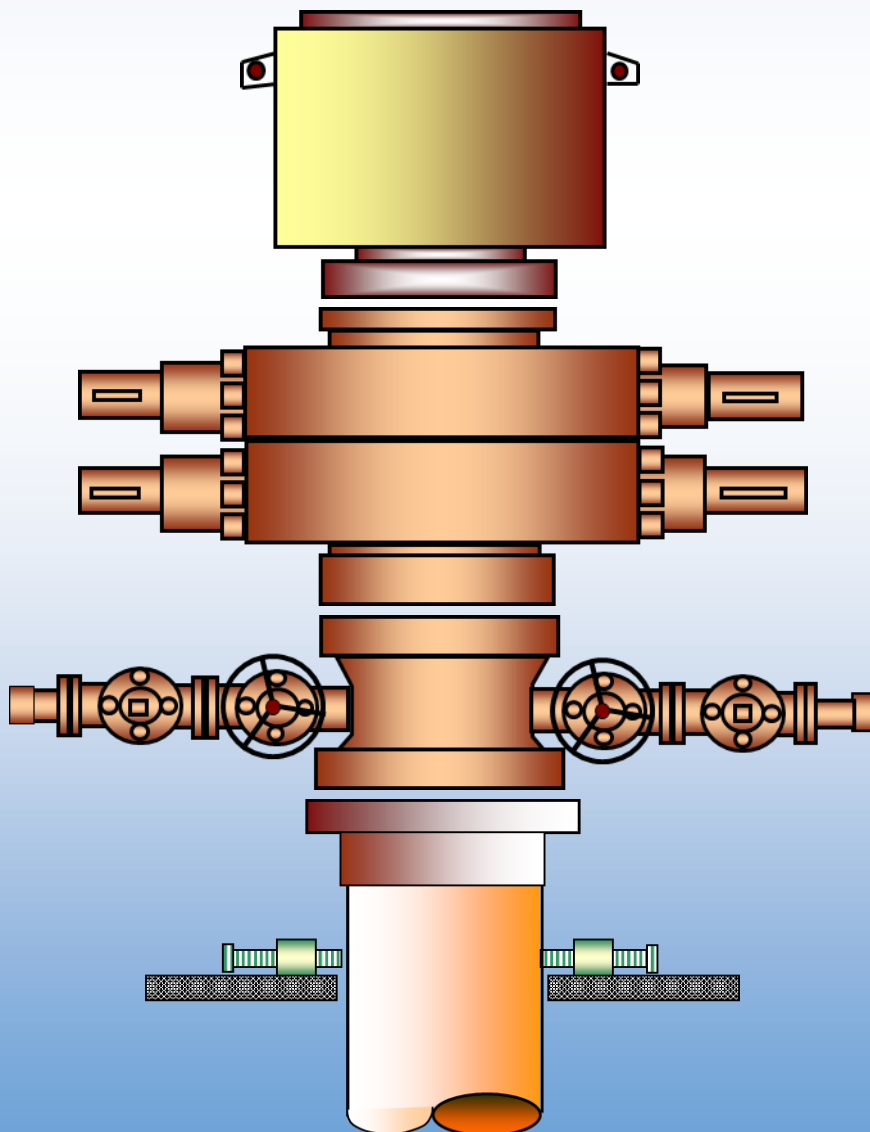
Check Valve 2 1/16" 5,000#WP

Choke Line 4 1/16" 5M Armored

Kill Line 2 1/16" 5M Armored

RIG 24

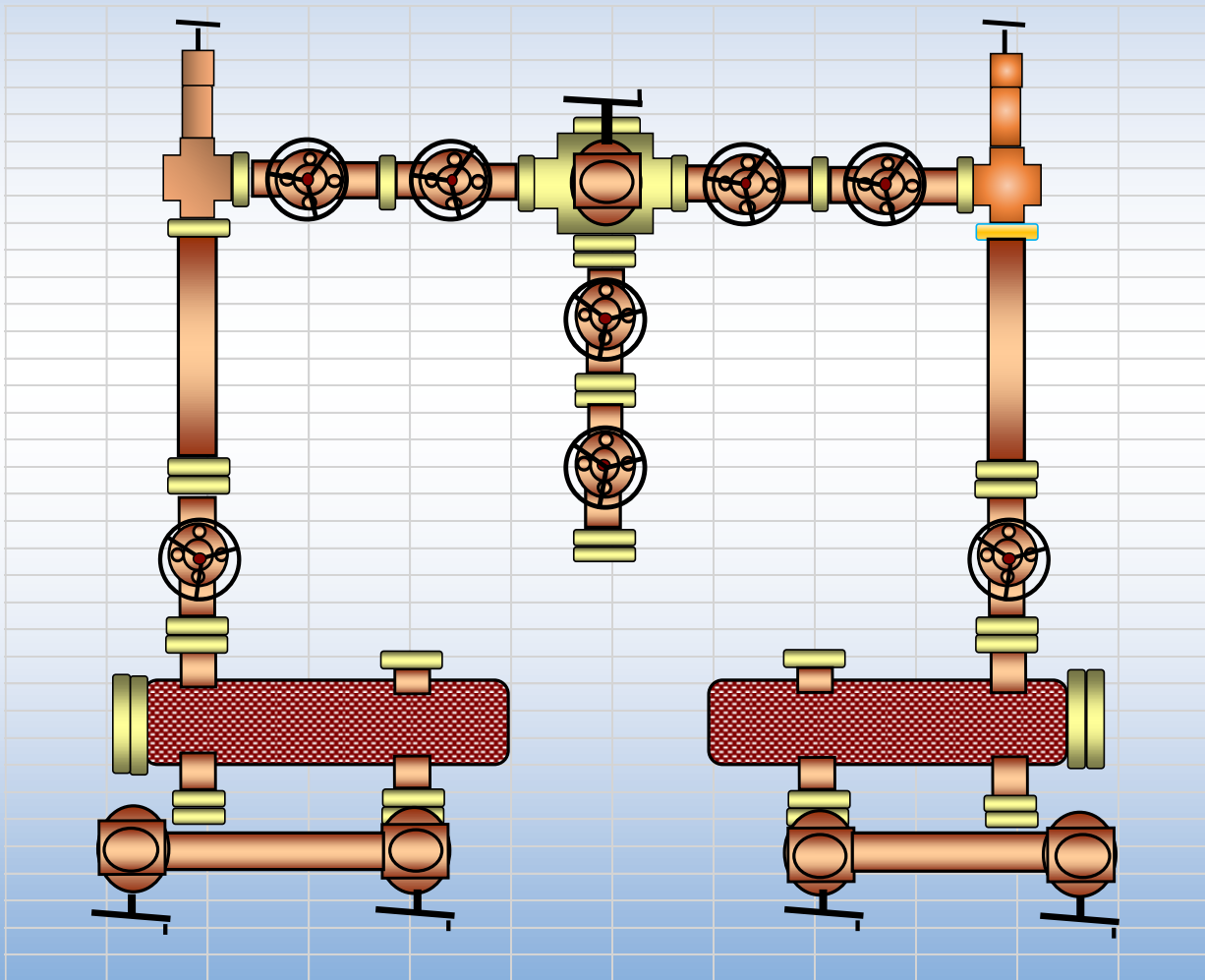
Latshaw
DRILLING™



RIG 24



Operator Supplied
Hydraulic Chokes

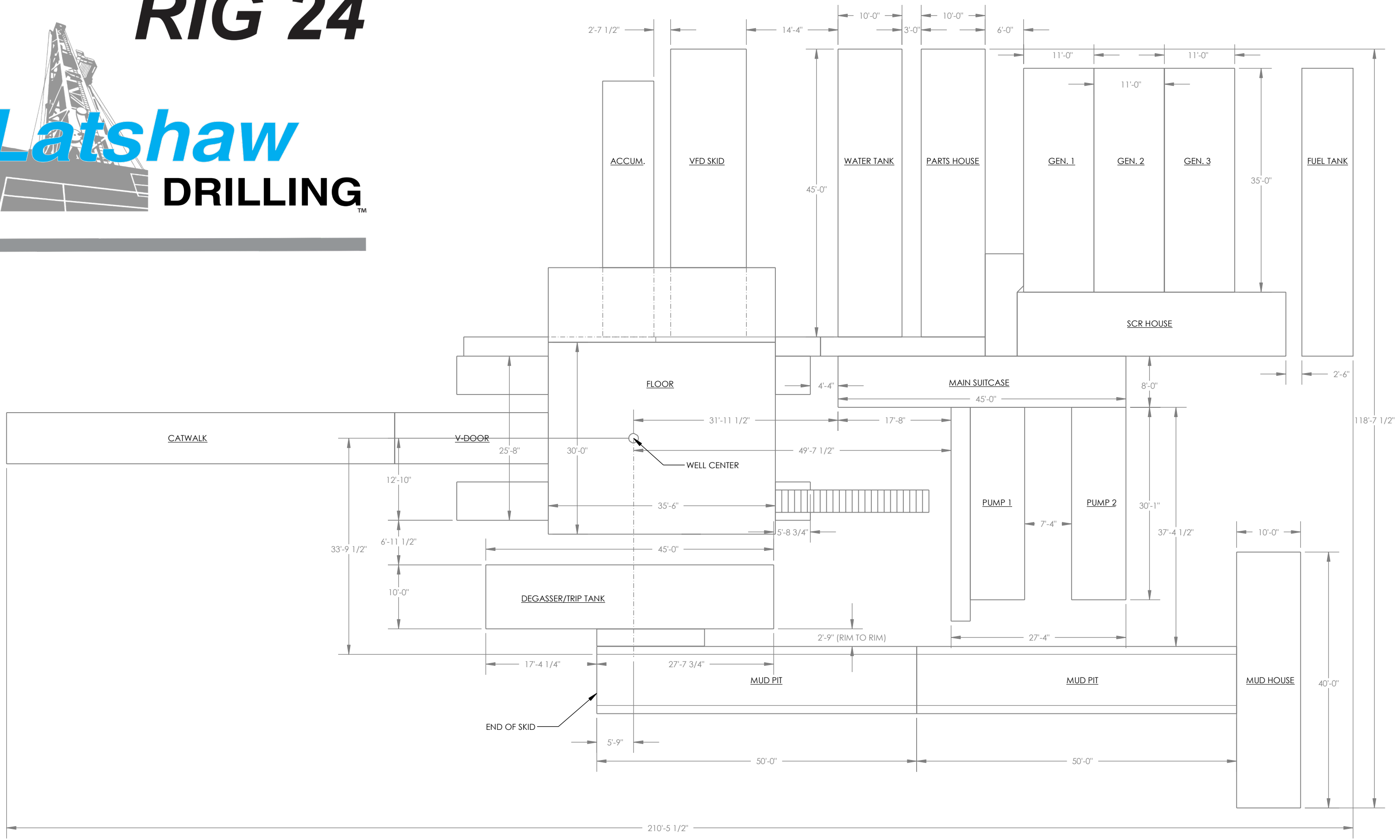


- 10- Gate Valve 3 1/8" 5,000#WP
- 2 - Gate Valve 4 1/16" 5,000#WP
- 1- Gate Valve 2 1/16" 5,000#WP
- 2 - Manual Adjustable Choke 3 1/10"
5,000#WP
- 2 - Spacer Spool, 3 1/8" 5 000#WP
- 1 - Studded Cross (5 way) 5M
- 1 - Instrument Flange and Gauge 5M
- 2-10 3/4" Buffer Chambers
- 3 - Blind Flanges, 3 1/8" 5M
- 1 - Bull plug/Hammer union Flange
3 1/8"5M

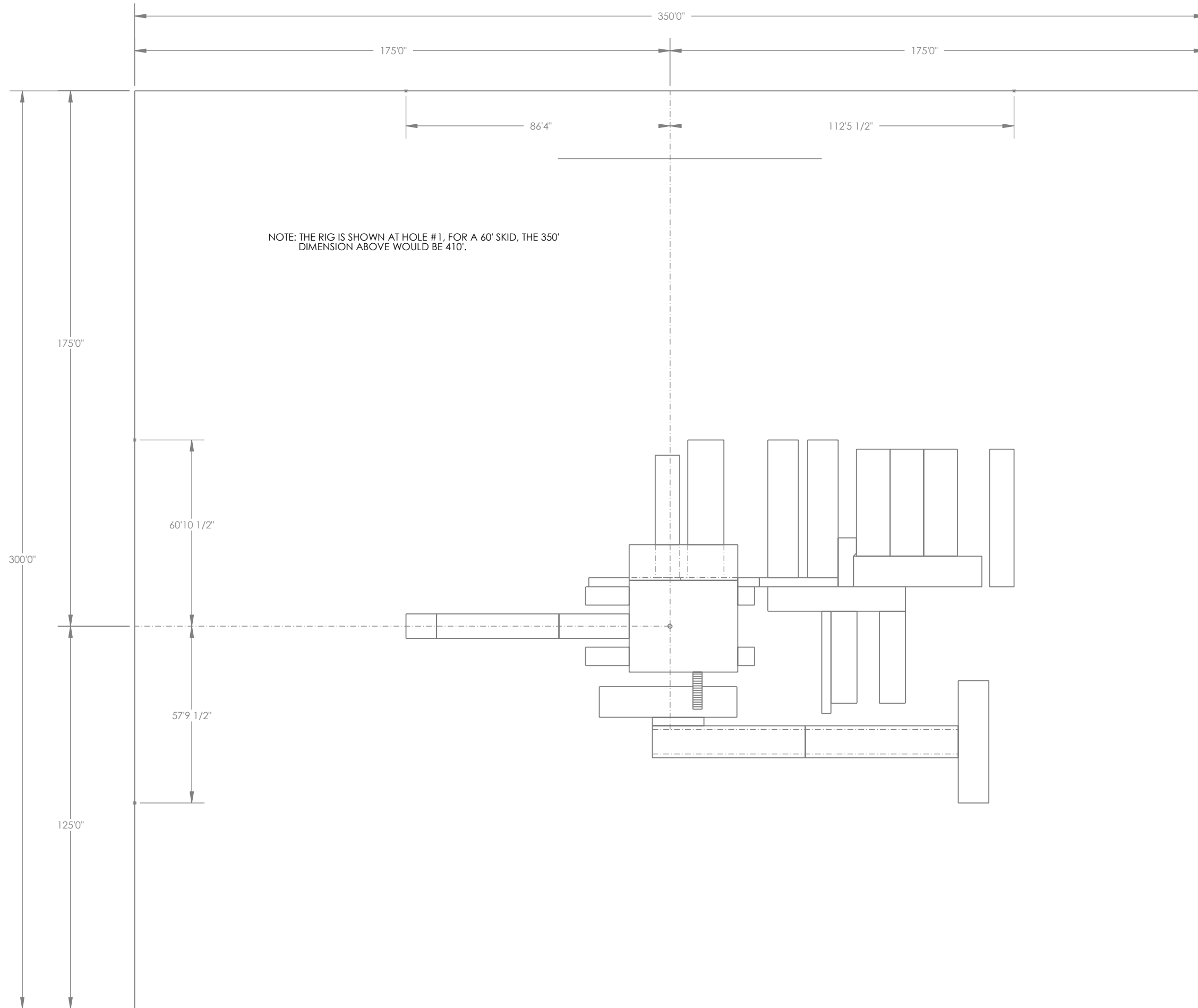
RIG 24



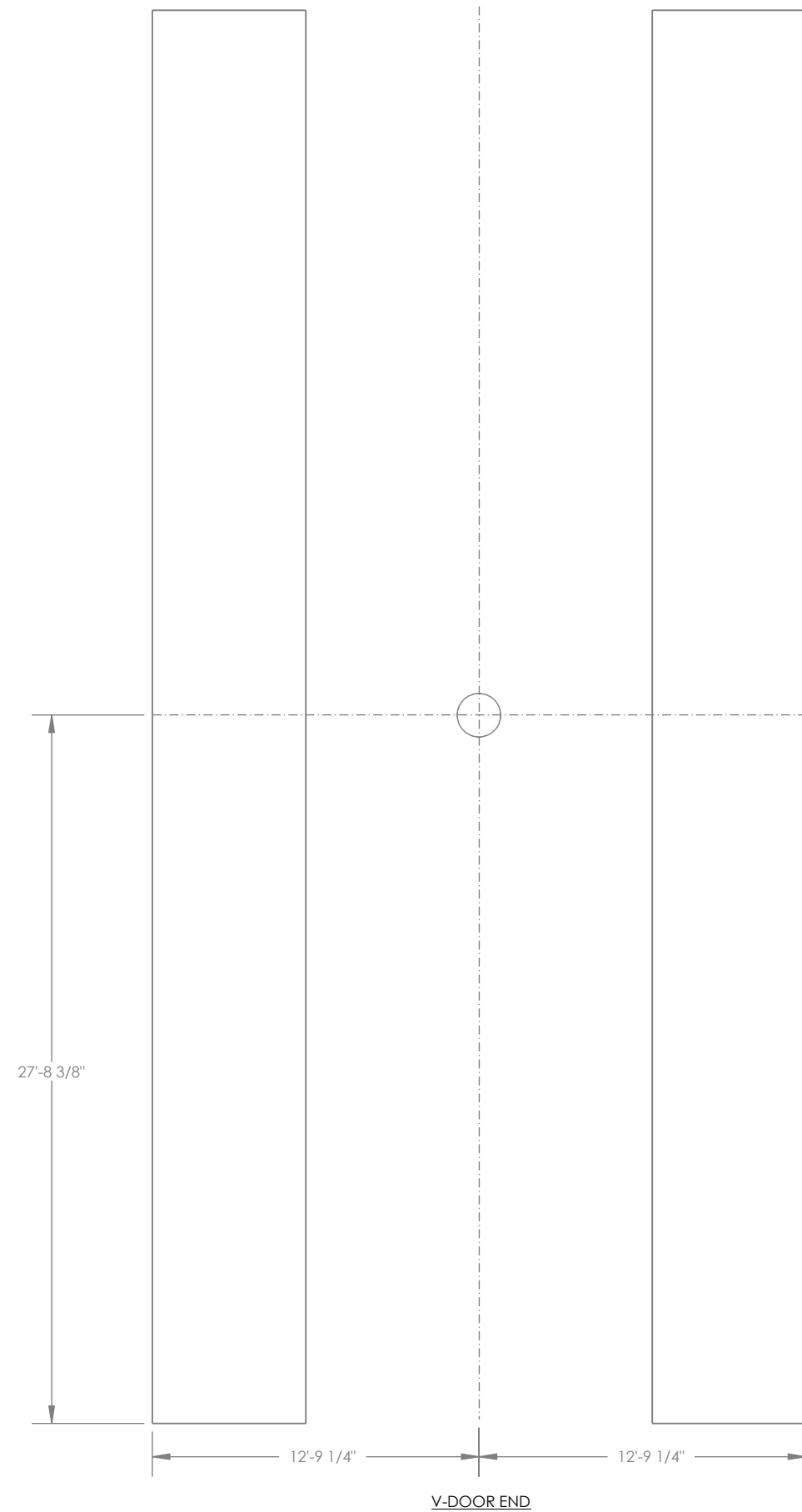
PLAN VIEW



RIG PLAT



MOUSEHOLES & MATTING BOARDS



NOTE: ALL DIMENSIONS ARE @ GROUND LEVEL.
 GROUND TO TOP OF ROTARY IS 22'-8".
 RAT HOLE IS @ 6.49 DEG. & 30' DEEP.
 SHORT MOUSE HOLE IS @
 1/2" PER FT. & 9' DEEP.
 LONG MOUSE HOLE IS @
 1/4" PER FT. & 78' DEEP.

