



Primary Equipment



| Major Systems | Secondary Systems |
|---|---|
| Drawworks Oilwell E-2000 2000HP Low Low rated 711,000# Hoisting Capacity (10) lines 822,000# Hoisting Capacity (12) lines. Driven by (2) GE 752 DC motors | Wichita 336 air operated/water cooled disc brake |
| Prime Power Omron/ SCR System, 3 Generator Bays, 4 SCR Bays 3-Caterpillar 3512B w/ Kato 1365 KW/1950KVA 3 phase 60 htz 346/600 Volt AC Generators | 1-3/8" WireRope 6 x 19 EIP IWRC Cold Start air system, primary Rig Air supply, floor hoisting systems |
| Mast/Substructure DSI 142' 1,000,000# Hook load, Slingshot Design 27'RBC, 24.1'RKB Crown Block 6-60" Sheaves 1-3/8" Groove Fastline 1-60" 1-3/8" Groove Hydraulic jack Skidding system | Fuel Capacity 18,000gal & Water Storage Capacity 500bbl Rotary Load 1,000,000# Set Back 600,000# |
| Top Drive - Traveling Block - Pipe Handling Varco TDS11SA VF AC 500 Ton Continental Emsco 500 Ton Block SJPetro 27 1/2" Rotary / Hydraulic Driven Varco ST-80 pipe handling system & IAT rot. MO & IAT rot. MO | Tool Pusher and Crew quarters rig matting boards Martin-Decker Type E, Pump SPM & PSI, Top Drive control, SCR system controls & MU/BO Torque |
| Mud Pumps 2 -Lewco WH-1612 100 HP Triplex 5,000#WP PSI Fluid Ends and delivery system Driven by (2) GE 752 DC motors | Manual Tongs, elevators, slips and clamps for Latshaw supplied DS Church Energy 3,000PSI Accumulator, 180 gal, 6 station w/remote |
| Mud System 3 - Tank system (1,200bbl active Capacity) w 150bbl TT Tandem WFSI linear Shale Shakers | 8-NOV Max2000 10HP Mud agitators Derrick Desander 2- 12" Cones w/6 x 8 Centrifugal driven by 100HP Motor |
| BOP Stack Description 13 5/8" 5,000#WP Annular 13 5/8" 5,000#WP Double Ram | Derrick 12-4" Cones w/ 6 x 8 Centrifugal driven by 100HP Mtr Type FC 4 1/16"10M x 3 1/16" 10M Choke Manifold |
| Drill String 8 " and 6-1/2" Drill Collars 5" Drill Pipe | Derrick Vaccu Flow 1200 Degasser 5" 19.5# G-105 and S-135 Heavy weight Drill pipe |

RIG 21

Latshaw
DRILLING™

Annular

13-5/8" 5,000#WP

Double Ram

13 5/8" 5,000#WP Pipe

13 5/8" 5,000#WP Blinds

With required adaptors

Mud Cross 13 5/8" 5,000#WP

Wing Valve 4 1/16" 5,000#WP

HCR Valve 4 1/16" 5,000#WP

Choke Blk 4 1/16" 10,000#WP

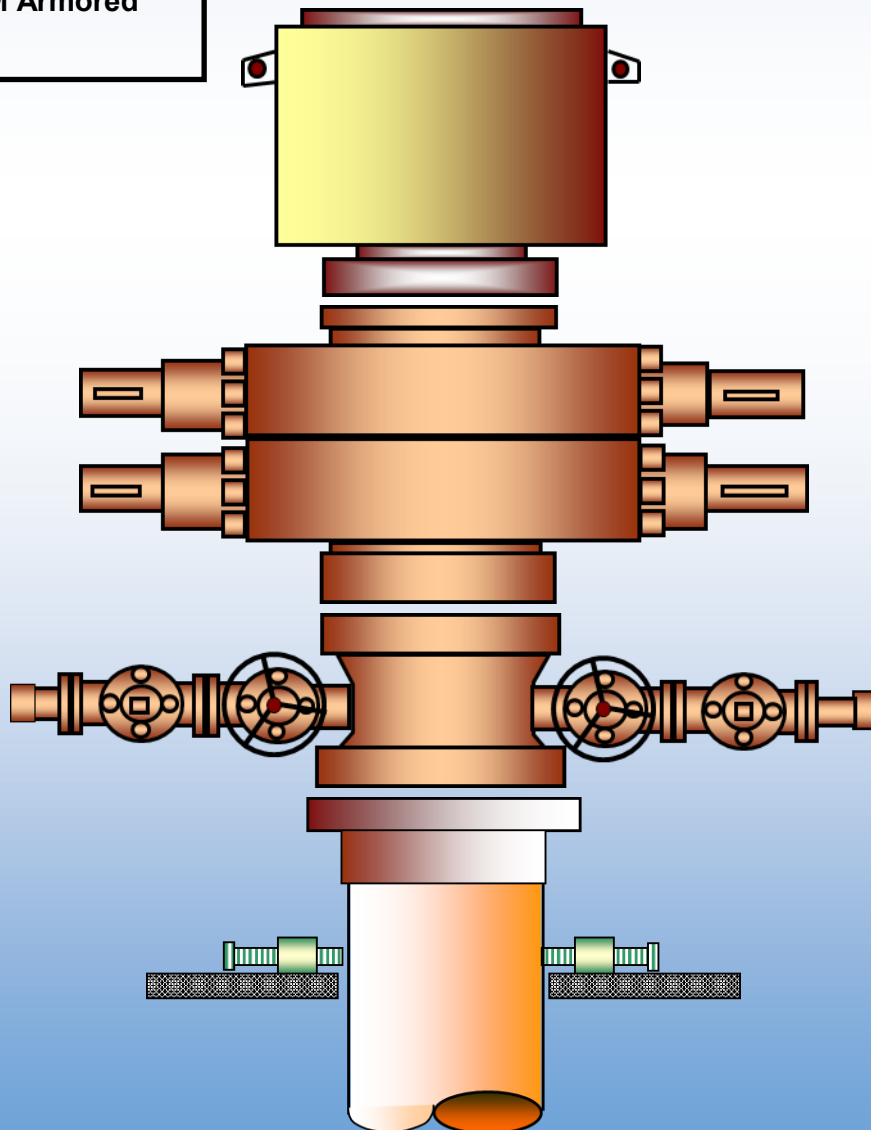
DSA 5M to 10M

2-Kill Valves 2 1/16" 5,000#WP

Check Valve 2 1/16" 5,000#WP

Choke Line 4 1/16" 10M Armored

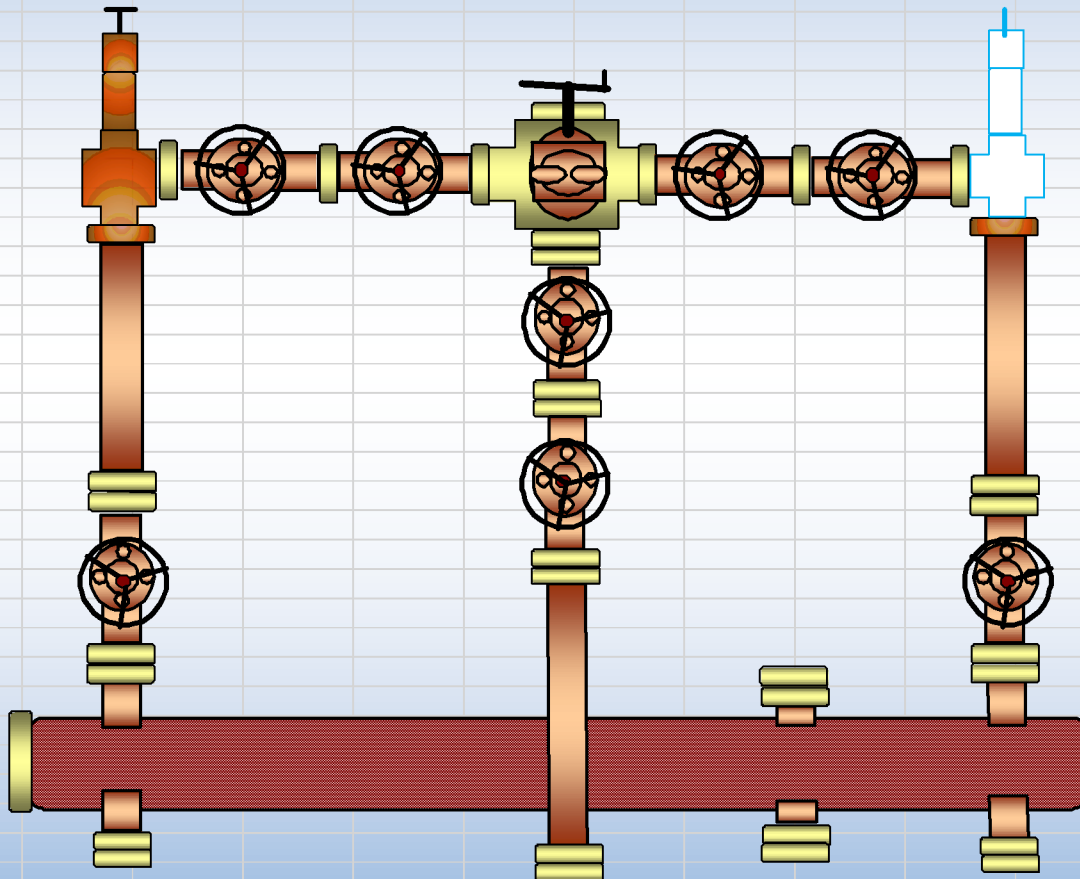
Kill Line 2 1/16" 5M Armored



RIG 21



Operator Supplied
Hydraulic Chokes

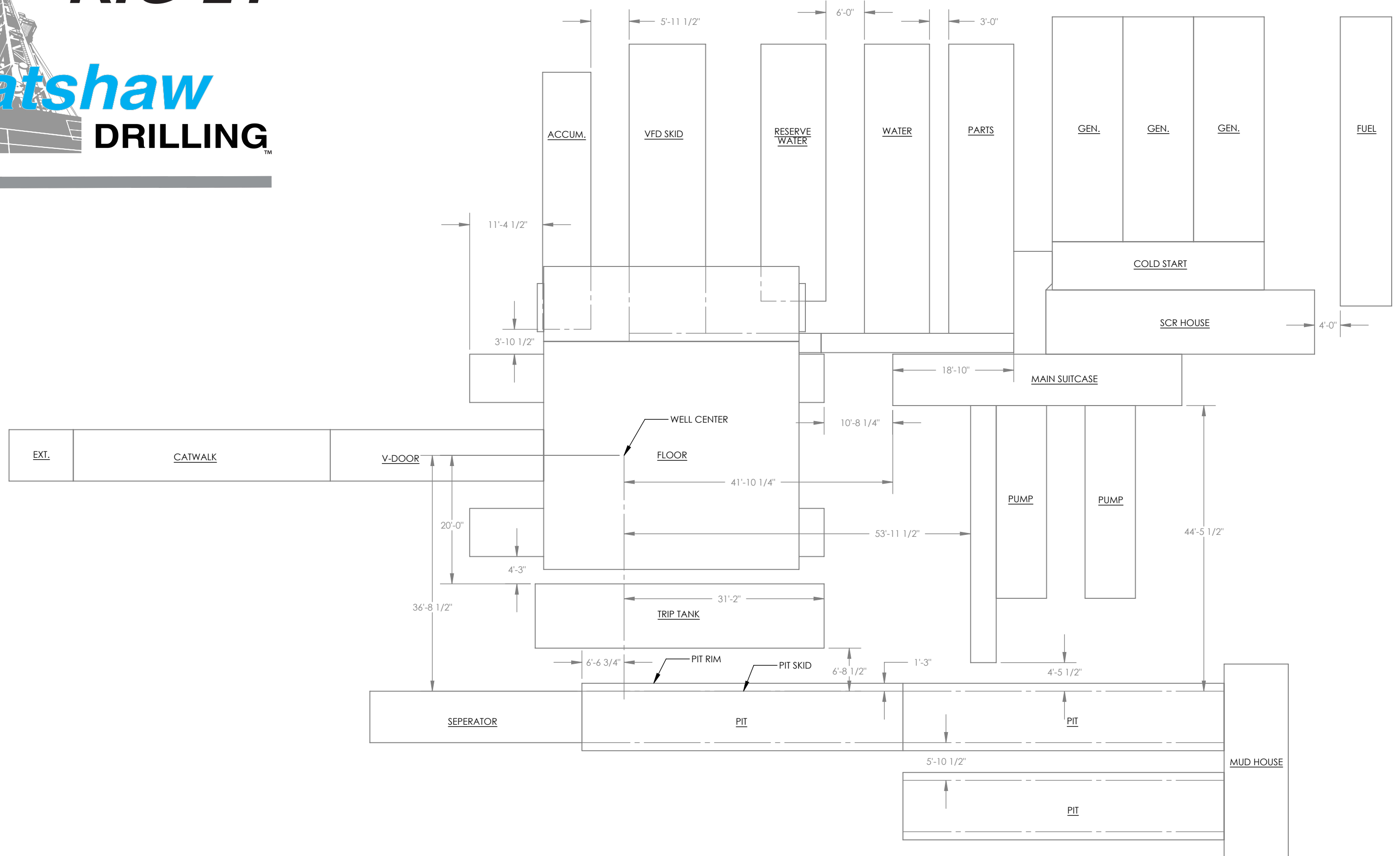


- 2 - Gate Valve 4 1/16" 10,000#WP
- 4 - Gate Valve 3 1/16" 10,000#WP
- 2 - Gate Valve 3 1/8" 5,000#WP
- 1- Gate Valve 2 1/16" 10,000#WP
- 1 - Manual Adjustable Choke 3 1/10"
10,000#WP
- 1 - Studded Cross (5way) 10,000#WP
- 1 - Instrument Flange and Gauge 10M
10 3/4" Buffer Chamber
- 4 - DSA's, 5 Blind Flanges
- 1 - Adapter Spool 2 1/16" 10,000#WP

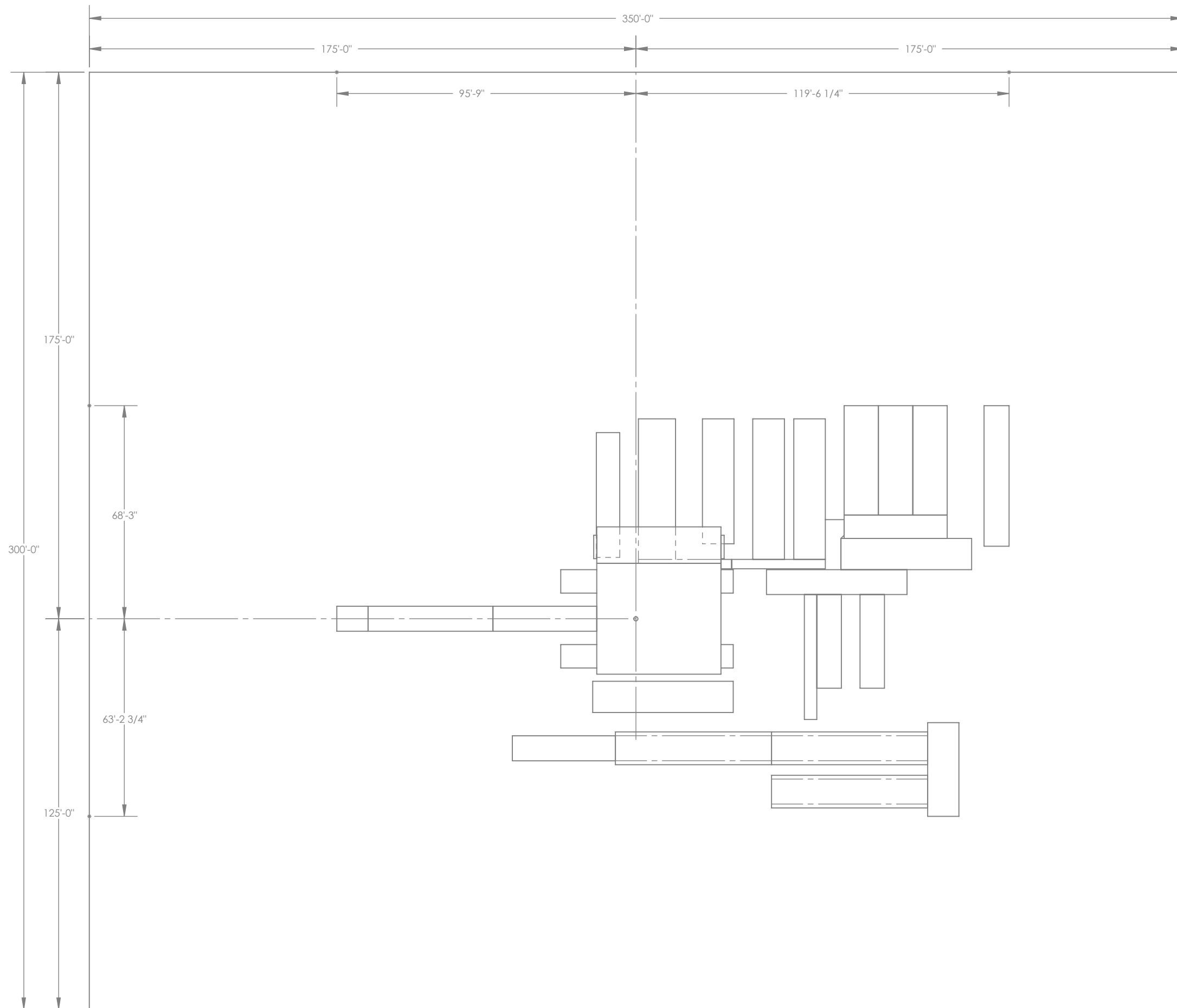


RIG 21

PLAN VIEW



RIG PLAT



MOUSEHOLES & MATTING BOARDS

V-DOOR END

